

HOME
REFINEMENTS

JULIEN

EXCLUSIVE
DISTINCTION



SINKS | FAUCETS | ACCESSORIES

*DECORATIVE
PLUMBING*

CATALOG

It's in our nature	4
Customized to impress	6
Unmatched Stainless Steel	8
Warranty	148
Product Index	151

RESOURCES

Customer Service

Our Customer Service Department is totally committed to providing support before, during, and after purchase. If you have a question or would like to place an order, a member of our team will be happy to provide advice and assistance. Contact us Monday to Friday, 8 a.m. to 5 p.m. EST.

1 866 901-5624
 customerservice@julien.ca

Web site

For more information about our products or to download their technical specifications, visit our website.

homerefinelements.ca

3D Configurator

To personalize your sink with our À la Carte options, visit the 3D configurator.



STAINLESS STEEL

Installations

Introduction	12
Standard Installations	13
À la Carte Installations	14

À la Carte

Introduction	16
Installation Type	18
Hole(s) for faucet and accessories	20
ADA compliance	21
Divider	22
Built-in drainboard	23
Built-in drawer	24
Position of the drain(s)	25
Custom grids	26

SmartStation

Introduction	30
Collection description	32
Kitchen sink sets	34
Kitchen sink sets, REV!@ installation	41
Kitchen sinks, REV!@ installation	43
Kitchen sinks	45

SocialCorner

Introduction	50
Collection description	52
Kitchen sinks	54

UrbanEdge

Introduction	56
Collection description	58
Kitchen sinks	60
Bar sinks	66
Utility sinks	67

J7

Introduction	70
Collection description	72
Kitchen sinks	74
Bar sinks	80
Utility sinks	81

Classic

Introduction	84
Collection description	86
Kitchen sinks	88
Bar sinks	94

Accessories

Introduction	96
Accessory Compatibility	98
Colanders	100
Trays	101
Bins	102
Drying racks	103
Veggie Scoop	103
Cutting boards	104
Presentation boards	104
Serving boards	105
Serving bins	107
Care products	108
Grids	110
Drains	112
Replacement parts	114

FIRECLAY

Fira

Introduction	118
Collection description	120
Kitchen sinks	122
Bar sinks	124

ACCESSORIES

Introduction	126
Colanders	128
Trays	129
Bins	129
Drying racks	130
Cutting boards	131
Presentation boards	131
Grids	132
Drains	133
Care products & replacement parts	134

FAUCETS

Introduction	136
Professionnal	138
Pull-out	140

IT'S IN OUR *NATURE*

Here at Julien, we've been cooking up a storm since 1946. We've become masters in the art of perfectly designing professional kitchens.

Today, our outstanding reputation precedes us throughout North America, where our expertise has become an essential tool for many world-renowned chefs.

In 2003, Home Refinements by Julien was born out of the desire to bring our expertise in designing and creating professional kitchens to the residential market. The outcome: a fusion of style and functionality that embodies the quality of a professional brand.



CUSTOMIZED TO *IMPRESS*

With Home Refinements, you have the freedom to unleash your imagination. Through our Signature program, we can create a wide range of custom stainless steel items made to measure for you. Handcrafted in our workshops, our Signature products will perfectly fit your creative style and needs. You are the designer!

Our expertise enables us to go beyond what the market offers. If your needs are more specific, our Signature sinks offer you the opportunity to further personalize your projects. Our selection will meet your wildest needs thanks to the wide range of possibilities offered by our technology!

Signature products forms

Use our Signature sinks form to let us know about your needs.
https://depot.julien.ca/home-refinements/formulaire/HR_Form_Signature_Sink_EN.pdf







Some materials just seem to have it all. Stainless steel is a perfect example, combining durability and corrosion resistance while being 100% recyclable. It protects against the risk of food contamination, is easy to clean and looks great! These advantages undoubtedly make it the perfect kitchen material.

UNMATCHED STAINLESS STEEL

Sixteen-gauge stainless steel is thicker and more resistant than normal industry standards. Because of its antibacterial and non-corrosive properties, it is a staple in the restaurant industry. For all these reasons, it is the only material we use to design our stainless steel sinks. Bent, welded and polished by hand, our products deliver quality worthy of the finest chefs.

Thickness chart

16 ga		1.5 mm (0.0595")
18 ga		1.2 mm (0.0480")
20 ga		0.9 mm (0.0355")
22 ga		0.7 mm (0.0291")



DIFFERENT INSTALLATION *METHODS*

When choosing a sink, it is important to carefully consider the installation method. It deserves close attention as it affects the look and allows you to take advantage of all the possibilities by incorporating additional and interesting accessory options.

Making the right choices when it comes to major design decisions will take your design to the next level and give you the kitchen of your dreams.

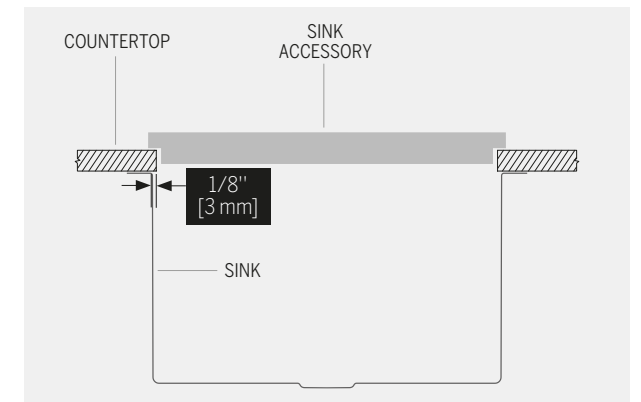
STANDARD INSTALLATIONS

There are many ways to install a sink! The ones outlined in this section are the recommended standard installations by Julien for optimal results and to ensure the proper use of our sink accessories.



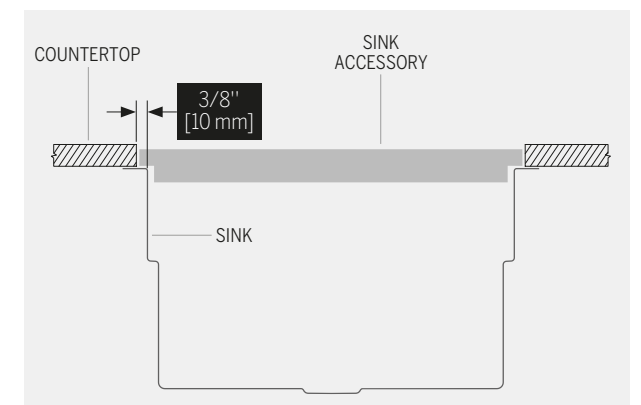
UNDERMOUNT OVERHANG 1/8"

This installation provides a 1/8" (3mm) overhang of the countertop over the flange of the bowl and matches the cut-out provided with your sink. All our undermount sinks are designed for a 1/8" overhang installation with the exception of the SmartStation REV10 collection. Our standard installations will guarantee a perfect fit with our sink accessories.



UNDERMOUNT REVEAL FOR SMARTSTATION REV10

The default installation for our SmartStation REV10 sinks leaves a positive reveal of 3/8" (10mm) on the front and back of the sink and a 1/8" (3mm) overhang on the sides. This installation lets you place your sink accessories on the exposed flange, allowing the countertop to act as a stopper for the accessories. Our standard installations will guarantee a perfect fit with our sink accessories.



À LA CARTE INSTALLATIONS

Some À la Carte options need special attention because they require installations that differ from those usually recommended. Please note that no cut-out template is provided for À la Carte sinks.

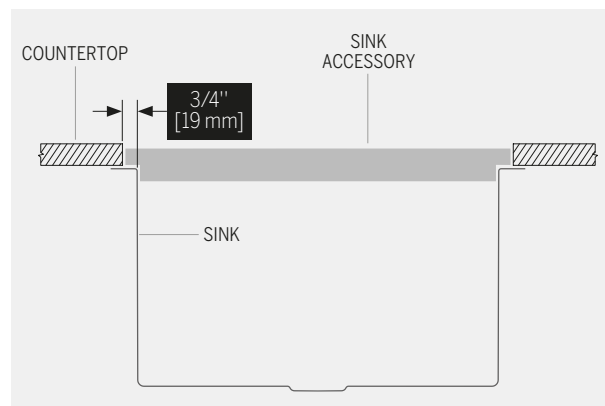


UNDERMOUNT REVEAL OPTION*

Choosing the REV option will extend the flanges of 3/4" at the front and back of the sink. During the installation, a positive reveal of 3/4" (19 mm) on the front and back of the sink must be created and we recommend a 1/8" (3 mm) overhang on the sides. This option is necessary if you intend to use your sink's top flange as an accessory rail. It can also be added to any of our sinks that were originally designed for a standard 1/8" overhang installation.

* Option not available for SmartStation and SocialCorner REV10 sinks that are already reveal installed.

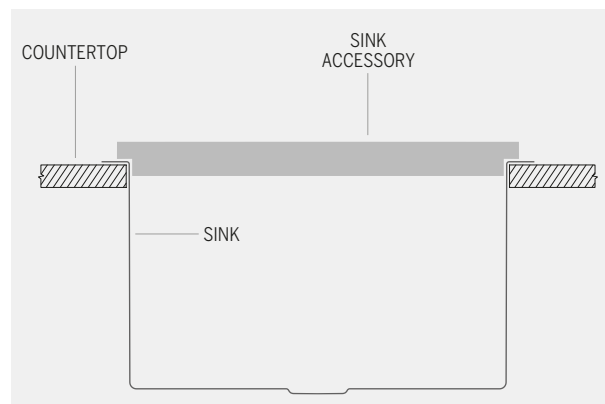
No cut-out template is provided for À la Carte and Signature sinks.
Confirm that your cabinet size will accommodate the bowl and faucet installation.



TOPMOUNT

For those who want to replace a sink without changing their countertop, the topmount installation option is ideal. You have a laminate countertop? If so, we recommend this installation.

This option is available for the majority of our Home Refinements stainless steel sinks. Please note that no cut-out template is provided with À la Carte sinks.





A UNIQUE *CREATION*

With the À la Carte options, you can transform any standard kitchen sink into a unique and highly functional water source.

This exclusive concept lets you personalize a sink with the options listed in this section. The process is simple: first, choose a kitchen sink from our stainless steel sink collections and personalize it by adding one or more options to customize it with features you wouldn't find in a standard bowl. All our customized À la Carte sinks are CSA certified.

THE *3D* CONFIGURATOR

Access the configurator



With our online configuration tool, you can turn your dreams into reality in just a few clicks.

STEP 01
Choose your sink

STEP 02
Choose your À la Carte options

STEP 03
View the accessories

STEP 04
Download the product code and technical spec sheet for your À la Carte sink

STEP 05
View the price of the selected sink with all its options

INSTALLATION TYPE

By default, all kitchen sinks in our standard collections are designed for undermount installation. With this option, you can now modify the type of installation by choosing one of the following alternatives :

UNDERMOUNT WITH APRON

Choosing a sink with an apron showcases the elegance of stainless steel.

Flat (UAF)

The undermount sink with a flat apron is a modern version of the farmhouse-style sink.

Curved (UAC)

Adding a country feel is as simple as installing an undermount sink with a curved apron.



TOPMOUNT (TF)

A topmount installation model is perfect if you have a laminate, wood or ceramic countertop, or if you want to replace your sink without changing your stone countertop. These models can also be flush-mounted. Choosing this option will add a 3" platform at the back and a 3/4" overhang on the three other sides of the sink.



UNDERMOUNT REVEAL OPTION (REV)

An additional 3/4" (19mm) of material to the front and back flanges allows our sinks to be installed with a 3/4" (19mm) positive reveal. This exposed upper flange will serve as a rail for your accessories.



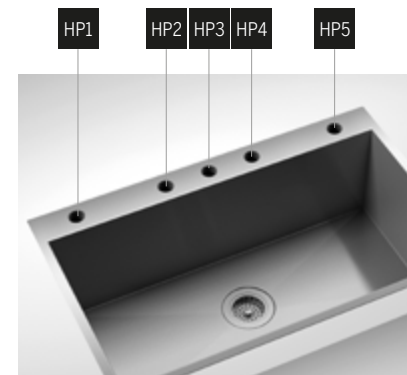
DESCRIPTION	OPTION
Undermount with apron flat	UAF
Undermount with apron curved	UAC
Topmount ⁽¹⁾	TF
Undermount reveal option	REV

1. Please note that all of these sinks come with at least one standard 1 3/8" diameter hole. Refer to the option "Hole(s) for faucet and accessories" to determine its position.

HOLE(S) FOR FAUCET AND ACCESSORIES

Topmount or flushmount models are equipped with a 3" wide rear platform for faucet and accessories, and by default, the hole is centered (HP3). If you want a different hole configuration, you can determine the number and layout of the holes needed.

- Far left (HP1)**
The center of HP1 is 3" from the inner left wall of the sink.
- Center left (HP2)**
The center of HP2 is 4" from the center of HP3.
- Center (HP3)**
The center of the bowl. If you select a double bowl sink, this hole will be aligned with the divider. Default hole position.
- Center right (HP4)**
The center of HP4 is 4" from the center of HP3.
- Far right (HP5)**
The center of HP5 is 3" from the inner right wall of the sink.



DESCRIPTION ⁽¹⁾	OPTION
Far left hole	HP1
Center left hole	HP2
Center hole	HP3
Center right hole	HP4
Far right hole	HP5

1. Depending on the width of the sink, which modifies the available space for drilling the holes, some limitations may apply. Only HP3 is available for 9" wide bowls and only HP2, HP3 and HP4 are available for 15", 18" and 21" wide bowls. In the case of double bowl sinks with a 9" wide bowl at the right or at the left, HP1 or HP5 may not be available.

ADA COMPLIANCE

ADA compliant sinks are designed to make their use easier, more practical and comfortable for people with disabilities or limited mobility. By choosing this option, your bowl(s) depth becomes 5 1/2" and it leaves enough space underneath to allow for knee clearance.

ADA



DESCRIPTION	OPTION
Bowl(s) depth 5 1/2"	ADA

DIVIDER

For double bowl sinks, a standard divider is full height and 1" wide. If you would prefer something different, we offer three alternative types of dividers, each with its own specific functions.

1" wide, 1" from the top of the bowl (DV1)

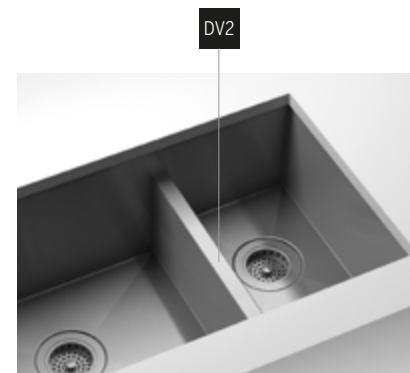
This divider is designed to avoid spills because the water will drain into the other bowl before overflowing onto the counter.

1" wide, 3" from the top of the bowl (DV2)

This divider is perfect for washing large pots and pans because their handles will overhang into the other bowl. This type of divider makes going from one bowl to the other an easy transition.

4" wide, 3" from the top of the bowl (DV3)

This divider provides a resting place for pans that are very hot or being filled with water directly from the faucet. This type of divider makes going from one bowl to the other an easy transition.



DESCRIPTION	OPTION
1" wide, 1" from the top of the bowl	DV1
1" wide, 3" from the top of the bowl	DV2
4" wide, 3" from the top of the bowl ⁽¹⁾	DV3

1. Please note that this type of divider will add 3" to the overall dimensions of your bowl, which will probably affect the size of your cabinet.

BUILT-IN DRAINBOARD

Designed primarily to dry dishes without cluttering up the counter, the built-in drainboard can also be used as a work surface for cooking and cleaning. The drainboard is embossed for greater stability, and its dimension is adapted to the front-to-back dimension of the bowl.

12" wide, left side (DB112)

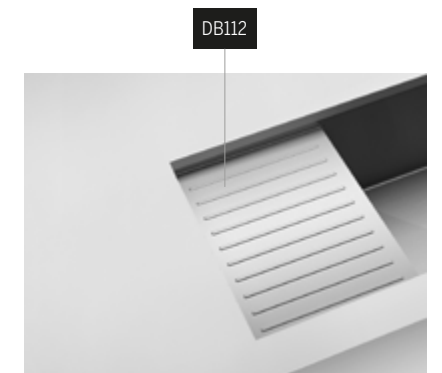
18" wide, left side (DB118)

24" wide, left side (DB124)

12" wide, right side (DB212)

18" wide, right side (DB218)

24" wide, right side (DB224)



DESCRIPTION	WIDTH	OPTION
Left built-in drainboard	12"	DB112
	18"	DB118
	24"	DB124
Right built-in drainboard	12"	DB212
	18"	DB218
	24"	DB224

BUILT-IN DRAWER

A drawer built into the side of the bowl is the perfect place for storing small everyday cleaning items like brushes and scouring pads. The inside dimension, front to back, is 12". It is always installed 1 3/4" from the top of the bowl.

Left wall (DW1)

Drawer in the left inner wall of the bowl

Right wall (DW2)

Drawer in the right inner wall of the bowl

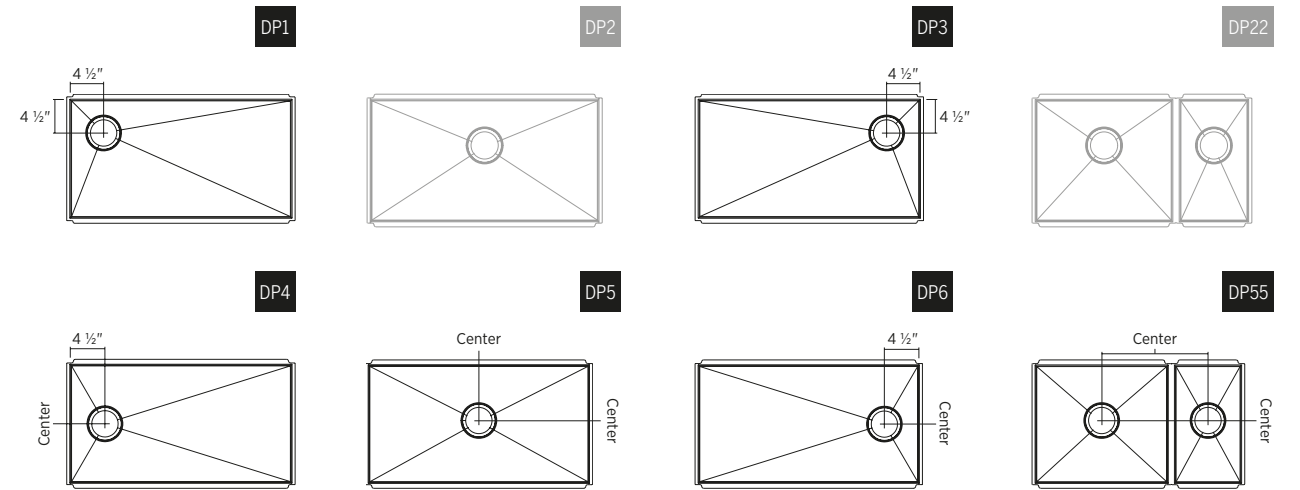


DESCRIPTION ^{(1) (2) (3)}	OPTION
Left built-in drawer	DW1
Right built-in drawer	DW2

1. Please note that adding a drawer will add 3 1/4" to the overall dimensions of your bowl, which will probably affect the size of your cabinet.
2. Due to the installation process of topmount sinks, it is not possible to add a built-in drawer when choosing the "Topmount" option. The only way to include a drawer on a topmount sink is to add a drainboard directly over it, on the same side.
3. When the ADA option is selected, it is not possible to add a built-in drawer.

POSITION OF THE DRAIN(S)

This option lets you choose the drain position in the bowl. By default, the drain is in the rear center of the bowl (DP2). This is the position recommended by Julien to maximize under-cabinet storage space and the flat surface area available at the bottom of the bowl. However, moving the drain to the following locations, while altering the style, will not sacrifice these benefits.



FOR SINGLE BOWL ⁽¹⁾

DESCRIPTION	OPTION
Rear left corner of the bowl	DP1
Rear right corner of the bowl	DP3
Center left of the bowl	DP4
Center of the bowl	DP5
Center right of the bowl	DP6

FOR DOUBLE BOWL ⁽¹⁾

DESCRIPTION	OPTION
Center of the bowl	DP55

1. Please note that if you move the drain position you must order a custom grid to fit. Refer to page 26 on How to order a custom grid.

CUSTOM GRIDS

How to order a custom grid based on a customized drain position

1. Choose the grid model that fits the sink on which the drain position has been changed.
2. Add the drain position code after the grid model number.

Separate with a dash.

Use this code to place your order

Model number

200909 - DP1

DRAIN POSITION CODE FOR SINGLE BOWL

DESCRIPTION	OPTION
Rear left corner of the bowl	DP1
Rear right corner of the bowl	DP3
Center left of the bowl	DP4
Center of the bowl	DP5
Center right of the bowl	DP6

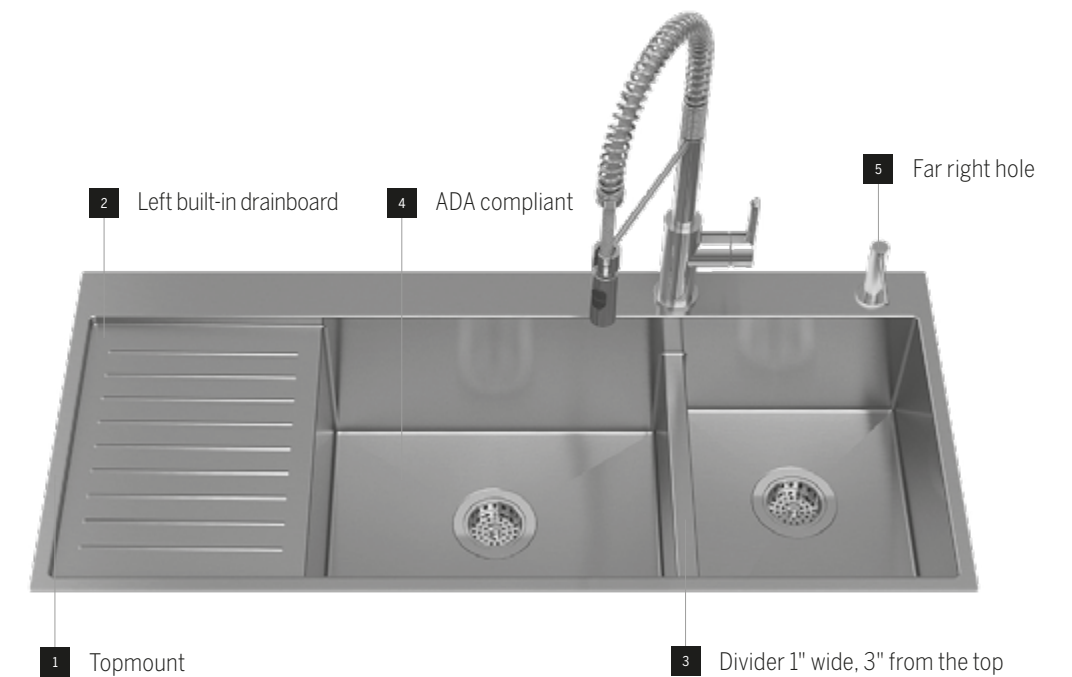
DRAIN POSITION CODE FOR DOUBLE BOWL

DESCRIPTION	OPTION
Center of the bowl	DP55

À LA CARTE

How to create your product number

1. From the stainless steel sink collections, choose the model number of the sink to be installed.
2. Add the code or codes referring to the different options to be added. Separate with a dash.



Use this code to place your order

Model number

003238 - 1 TF - 2 DB112 - 3 DV2 - 4 ADA - 5 HP5

FUNCTION, FORM AND *FINESSE*

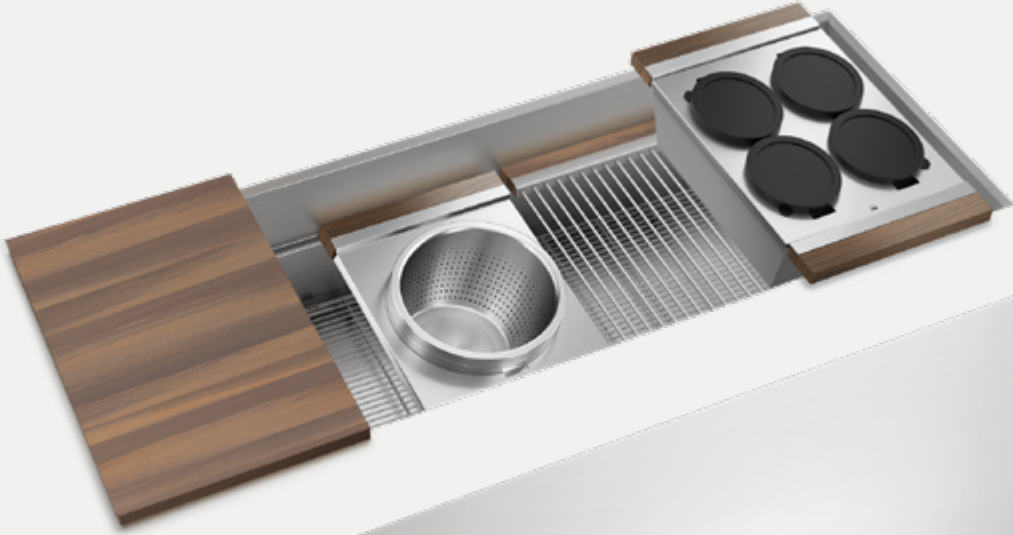
Don't be fooled by its beauty: the SmartStation sink is also remarkably efficient! It's been designed from the ground up for culinary competition. Equipped with the finest accessories that glide from one side of the bowl to the other on two levels, it centralizes all the steps needed to prepare all sorts of feasts. A colander, a cutting board, a four-bowl serving bin and a drying rack are included, along with a grid to protect the stainless steel finish. The set is available in walnut or maple finishes and is ready to be upgraded: choose from over 30 matching accessories to take its functionality up a notch.



SMARTSTATION

- Handcrafted in Canada
- Commercial quality stainless steel 16 ga thickness
- Corrosion resistant material 304 series (18/10)
- Unique design allowing the Home Refinements standard accessories to slide one over the other on two levels
- Attractive combination of UrbanEdge® and J7® collections : vertical square corners [0mm] and slightly rounded corners [7mm] for bottom front and back folds
- Environmentally friendly product, 100% recyclable
- Elegant no. 4 brushed finish that matches the appliances
- Highly efficient sound deadening pads
- Practical flat sink bottom and straight bowl sides that maximize available space in the bowl
- Stylish and functional bowl bottom grooves that facilitate water drainage
- Rear or side 3 1/2" drain placement
- Mounting hardware included
- Certifications: ASME A112.19.3, CSA B45.0, CSA B45.4

All items included in the SmartStation sets are also sold separately. Refer to page 43 for bowl and page 96 for accessories.



SMARTSTATION SET

UNDERMOUNT **OVERHANG 1/8"** INSTALLATION

Accessories are available in **maple** or **walnut**. Walnut accessories are featured on this page.

Single Bowl

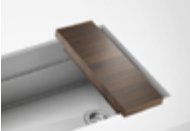
Double Bowl



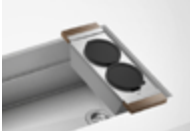
THE BAR STATION - ACCESSORIES INCLUDED



Grid



Cutting board



Serving bin with two bowls

THE ESSENTIAL STATION - ACCESSORIES INCLUDED



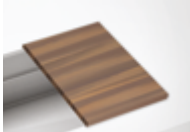
Grid(s)



Drying rack



Serving board with mixing bowl and colander



Cutting board



Serving bin with four bowls

THE SERVICE STATION - ACCESSORIES INCLUDED



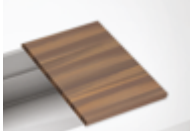
Grid(s)



Drying rack



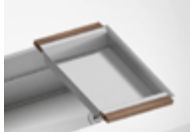
Serving board with mixing bowl and colander



Cutting board



Serving bin with four bowls



Tray

AVAILABLE ACCESSORIES

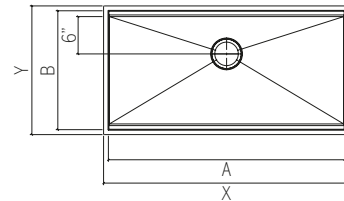
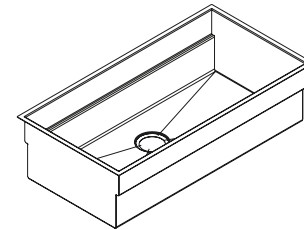
Refer to page 96 for accessory compatibility

SMARTSTATION SET

WITH MAPLE ACCESSORIES

Undermount overhang 1/8" installation

KITCHEN SINK



UNDERMOUNT REVEAL INSTALLATION

Choosing this option will extend the flanges of 3/4" at the front and back of the sink.

This will allow the top accessories to sit directly on the sink instead of on the countertop.

Refer to page 27 for the instructions to use the code to place your order.

DESCRIPTION	OPTION
Extended flange for REV undermount reveal installation	REV

CABINET 18"



OVERALL (X × Y)
13 1/2" × 19 5/8"

Sink set 005413

BOWL (A × B × C)
12" × 18" × 10"

INCLUDED



Grid
200930



Cutting board
210080



Serving bin with two bowls
225312

CABINET 24"



OVERALL (X × Y)
19 1/2" × 19 5/8"

Sink set 005414

BOWL (A × B × C)
18" × 18" × 10"

INCLUDED



Grid
200931

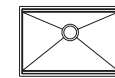


Cutting board
210080



Serving bin with two bowls
225312

CABINET 27"



OVERALL (X × Y)
25 1/2" × 19 5/8"

Sink set 005415

BOWL (A × B × C)
24" × 18" × 10"

INCLUDED



Grid
200913



Cutting board
210068



Serving bin with four bowls
225315

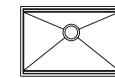


Drying rack
215307



Serving board with mixing bowl and colander
225308

CABINET 33"



OVERALL (X × Y)
28 1/2" × 19 5/8"

Sink set 005416

BOWL (A × B × C)
27" × 18" × 10"

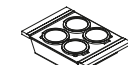
INCLUDED



Grid
200914



Cutting board
210068



Serving bin with four bowls
225315

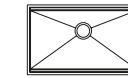


Drying rack
215307



Serving board with mixing bowl and colander
225308

CABINET 36"



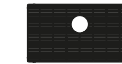
OVERALL (X × Y)
31 1/2" × 19 5/8"

Sink set 005417

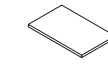
BOWL (A × B × C)
30" × 18" × 10"

3,150 \$

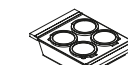
INCLUDED



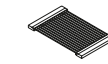
Grid
200915



Cutting board
210068



Serving bin with four bowls
225315

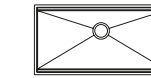


Drying rack
215307



Serving board with mixing bowl and colander
225308

CABINET 42"



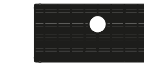
OVERALL (X × Y)
37 1/2" × 19 5/8"

Sink set 005418

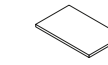
BOWL (A × B × C)
36" × 18" × 10"

3,450 \$

INCLUDED



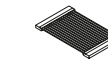
Grid
200932



Cutting board
210068



Serving bin with four bowls
225315

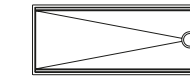


Drying rack
215307



Serving board with mixing bowl and colander
225308

CUSTOM CABINET



OVERALL (X × Y)
49 1/2" × 19 5/8"

Sink set 005419

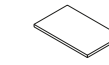
BOWL (A × B × C)
48" × 18" × 10"

4,300 \$

INCLUDED



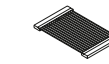
Grids
200927
200929



Cutting board
210068



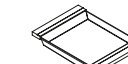
Serving bin with four bowls
225315



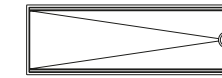
Drying rack
215307



Serving board with mixing bowl and colander
225308



Tray
205334



OVERALL (X × Y)
61 1/2" × 19 5/8"

Sink set 005420

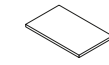
BOWL (A × B × C)
60" × 18" × 10"

4,900 \$

INCLUDED



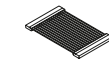
Grids
200927
200928



Cutting board
210068



Serving bin with four bowls
225315



Drying rack
215307



Serving board with mixing bowl and colander
225308

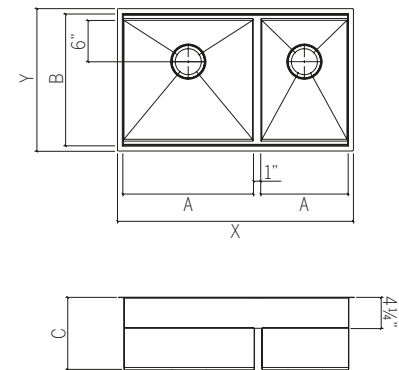
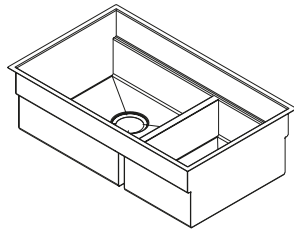


Tray
205334

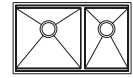
SMARTSTATION SET WITH MAPLE ACCESSORIES

Undermount overhang 1/8" installation

KITCHEN SINK



CABINET 36"

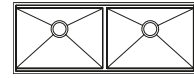


OVERALL (X × Y)
32 1/2" × 19 5/8"

Sink set 005421

BOWL (A × B × C)
G 18" × 18" × 10"
D 12" × 18" × 10"

CUSTOM CABINET

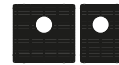


OVERALL (X × Y)
50 1/2" × 19 5/8"

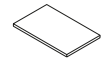
Sink Set 005422

BOWL (A × B × C)
G 24" × 18" × 10"
D 24" × 18" × 10"

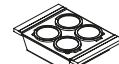
INCLUDED



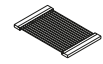
Grid
200931 (G)
200930 (D)



Cutting board
210068



Serving bin with
four bowls
225315



Drying rack
215307

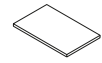


Serving board with
mixing bowl and
colander
225308

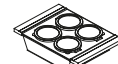
INCLUDED



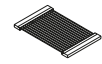
Grid
200913 (G)
200913 (D)



Cutting board
210068



Serving bin with
four bowls
225315



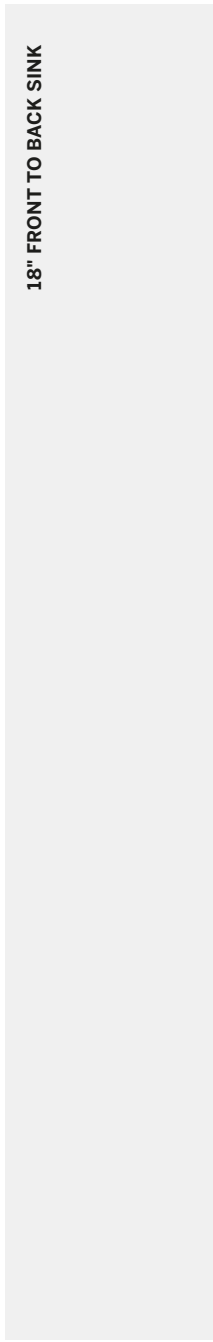
Drying rack
215307



Serving board with
mixing bowl and
colander
225308



Tray
205334



18" FRONT TO BACK SINK

UNDERMOUNT REVEAL INSTALLATION

Choosing this option will extend the flanges of 3/4" at the front and back of the sink.

This will allow the top accessories to sit directly on the sink instead of on the countertop.

Refer to page 27 for the instructions to use the code to place your order.

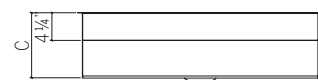
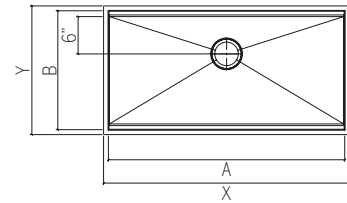
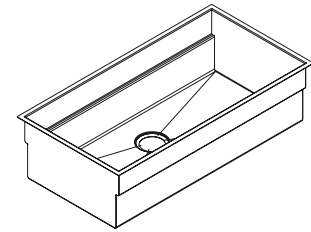
DESCRIPTION	OPTION
Extended flange for REV undermount reveal installation	REV

SMARTSTATION SET

WITH WALNUT ACCESSORIES

Undermount overhang 1/8" installation

KITCHEN SINK



CABINET 18"



OVERALL (X × Y)
13 1/2" × 19 5/8"

Sink set 005463

BOWL (A × B × C)
12" × 18" × 10"

INCLUDED



Grid
200930



Cutting board
210077



Serving bin with
two bowls
225212

CABINET 24"



OVERALL (X × Y)
19 1/2" × 19 5/8"

Sink set 005464

BOWL (A × B × C)
18" × 18" × 10"

INCLUDED



Grid
200931

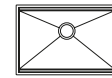


Cutting board
210077



Serving bin with
two bowls
225212

CABINET 27"

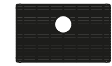


OVERALL (X × Y)
25 1/2" × 19 5/8"

Sink set 005465

BOWL (A × B × C)
24" × 18" × 10"

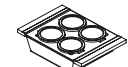
INCLUDED



Grid
200913



Cutting board
210067



Serving bin with
four bowls
225215

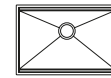


Drying rack
215207



Serving board with
mixing bowl and
colander
225208

CABINET 33"



OVERALL (X × Y)
28 1/2" × 19 5/8"

Sink set 005466

BOWL (A × B × C)
27" × 18" × 10"

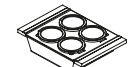
INCLUDED



Grid
200914



Cutting board
210067



Serving bin with
four bowls
225215

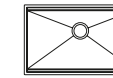


Drying rack
215207



Serving board with
mixing bowl and
colander
225208

CABINET 36"

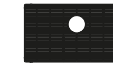


OVERALL (X × Y)
31 1/2" × 19 5/8"

Sink set 005467

BOWL (A × B × C)
30" × 18" × 10"

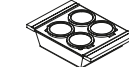
INCLUDED



Grid
200915



Cutting board
210067



Serving bin with
four bowls
225215

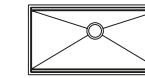


Drying rack
215207



Serving board with
mixing bowl and
colander
225208

CABINET 42"

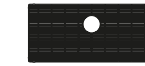


OVERALL (X × Y)
37 1/2" × 19 5/8"

Sink set 005468

BOWL (A × B × C)
36" × 18" × 10"

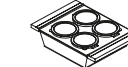
INCLUDED



Grid
200932



Cutting board
210067



Serving bin with
four bowls
225215

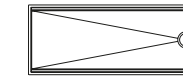


Drying rack
215207



Serving board with
mixing bowl and
colander
225208

CUSTOM CABINET



OVERALL (X × Y)
49 1/2" × 19 5/8"

Sink set 005469

BOWL (A × B × C)
48" × 18" × 10"

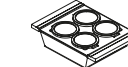
INCLUDED



Grids
200927
200929



Cutting board
210067



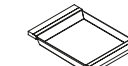
Serving bin with
four bowls
225215



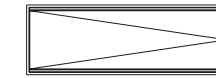
Drying rack
215207



Serving board with
mixing bowl and
colander
225208



Tray
205234



OVERALL (X × Y)
61 1/2" × 19 5/8"

Sink set 005470

BOWL (A × B × C)
60" × 18" × 10"

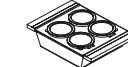
INCLUDED



Grids
200927
200928



Cutting board
210067



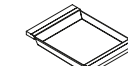
Serving bin with
four bowls
225215



Drying rack
215207



Serving board with
mixing bowl and
colander
225208



Tray
205234

UNDERMOUNT REVEAL INSTALLATION

Choosing this option will extend the flanges of 3/4" at the front and back of the sink.

This will allow the top accessories to sit directly on the sink instead of on the countertop.

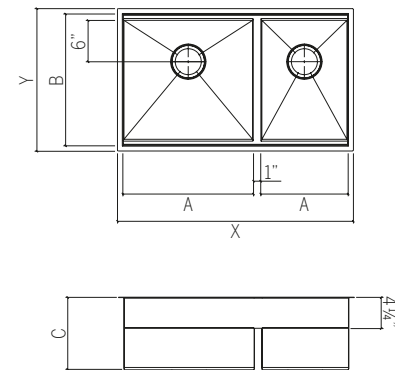
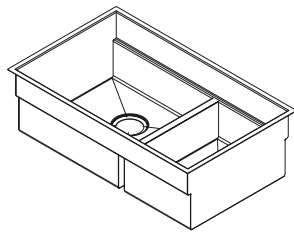
Refer to page 27 for the instructions to use the code to place your order.

DESCRIPTION	OPTION
Extended flange for REV undermount reveal installation	REV

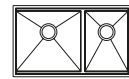
SMARTSTATION SET WITH WALNUT ACCESSORIES

Undermount overhang 1/8" installation

KITCHEN SINK



CABINET 36"

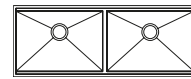


OVERALL (X × Y)
32 1/2" × 19 5/8"

Sink set 005471

BOWL (A × B × C)
G 18" × 18" × 10"
D 12" × 18" × 10"

CUSTOM CABINET

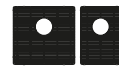


OVERALL (X × Y)
50 1/2" × 19 5/8"

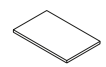
Sink set 005472

BOWL (A × B × C)
G 24" × 18" × 10"
D 24" × 18" × 10"

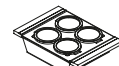
INCLUDED



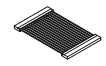
Grid
200931 (G)
200930 (D)



Cutting board
210067



Serving bin with
four bowls
225215



Drying rack
215207

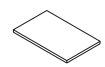


Serving board with
mixing bowl and
colander
225208

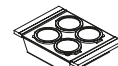
INCLUDED



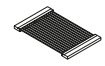
Grid
200913 (G)
200913 (D)



Cutting board
210067



Serving bin with
four bowls
225215



Drying rack
215207



Serving board with
mixing bowl and
colander
225208



Tray
205334

UNDERMOUNT REVEAL INSTALLATION

Choosing this option will extend the flanges of 3/4" at the front and back of the sink.

This will allow the top accessories to sit directly on the sink instead of on the countertop.

Refer to page 27 for the instructions to use the code to place your order.

DESCRIPTION	OPTION
Extended flange for REV undermount reveal installation	REV

ACCESSORIES INCLUDED



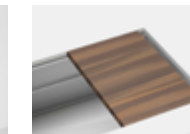
Grid Included



Drying rack Included



Serving board with mixing bowl and colander Included



Cutting board Included



Serving bin with four bowls Included

AVAILABLE ACCESSORIES

Refer to page 96 for accessory compatibility

Single bowl



18" FRONT TO BACK SINK



SMARTSTATION REV10 SET

UNDERMOUNT REVEAL INSTALLATION

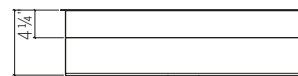
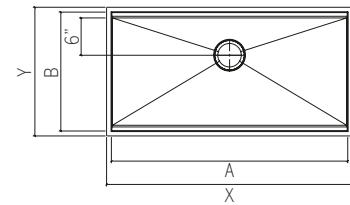
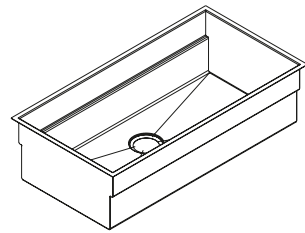
SMARTSTATION **REV10** SET

WITH WALNUT ACCESSORIES

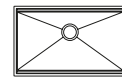
Undermount **reveal** installation

KITCHEN SINK

with extended flange



CABINET 36"

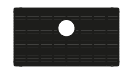


OVERALL (X × Y)
31 1/2" × 20 3/8"

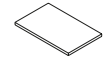
Sink set 005460

BOWL (A × B × C)
30" × 17 1/4" × 10"

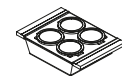
INCLUDED



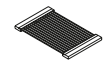
Grid
200909



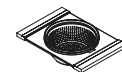
Cutting board
210065



Serving bin with
four bowls
225214

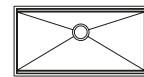


Drying rack
215206



Serving board with
mixing bowl and
colander
225207

CABINET 42"

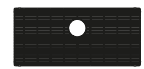


OVERALL (X × Y)
37 1/2" × 20 3/8"

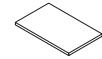
Sink set 005461

BOWL (A × B × C)
36" × 17 1/4" × 10"

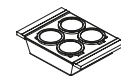
INCLUDED



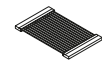
Grid
200911



Cutting board
210065



Serving bin with
four bowls
225214



Drying rack
215206



Serving board with
mixing bowl and
colander
225207

CUSTOM CABINET



OVERALL (X × Y)
49 1/2" × 20 3/8"

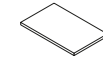
Sink set 005462

BOWL (A × B × C)
48" × 17 1/4" × 10"

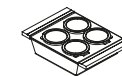
INCLUDED



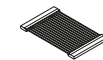
Grids
200949
200950



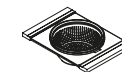
Cutting board
210065



Serving bin with
four bowls
225214

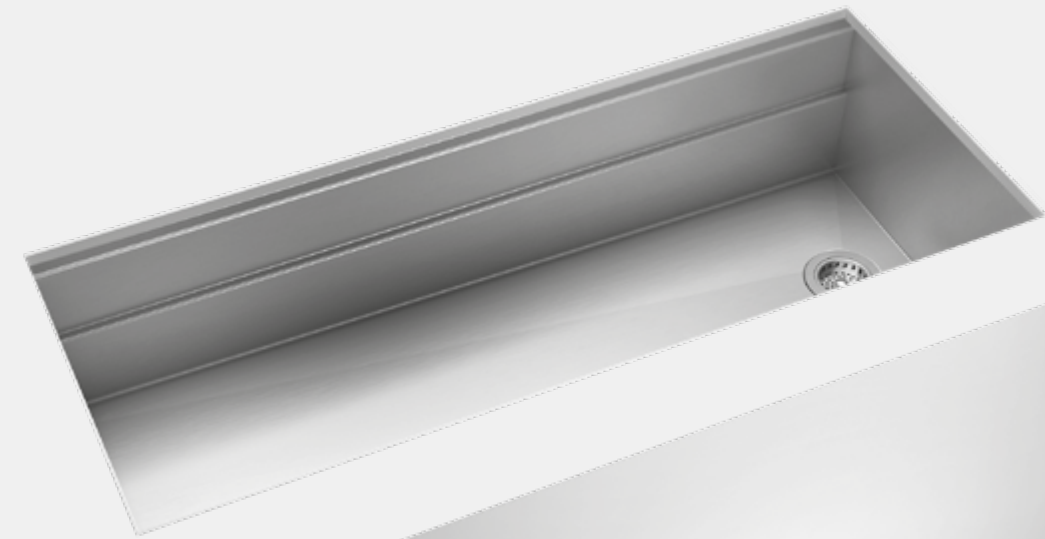


Drying rack
215206



Serving board with
mixing bowl and
colander
225207

17" FRONT TO BACK SINK



SMARTSTATION **REV10** SET

UNDERMOUNT **REVEAL** INSTALLATION

Single bowl



AVAILABLE ACCESSORIES

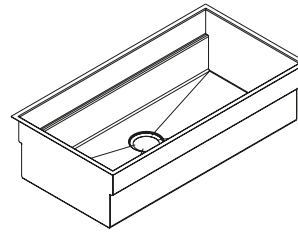
Refer to page 96 for accessory compatibility

SMARTSTATION **REV10** SINK

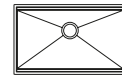
Undermount **reveal** installation

KITCHEN SINK

with extended flange



CABINET 36"

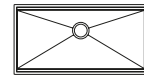


OVERALL (X × Y)
31½" × 20¾"

Sink 005500

BOWL (A × B × C)
30" × 17¼" × 10"

CABINET 42"

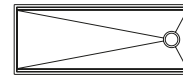


OVERALL (X × Y)
37½" × 20¾"

Sink 005501

BOWL (A × B × C)
36" × 17¼" × 10"

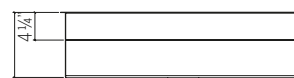
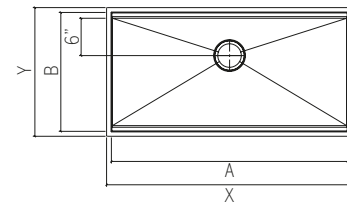
CUSTOM CABINET



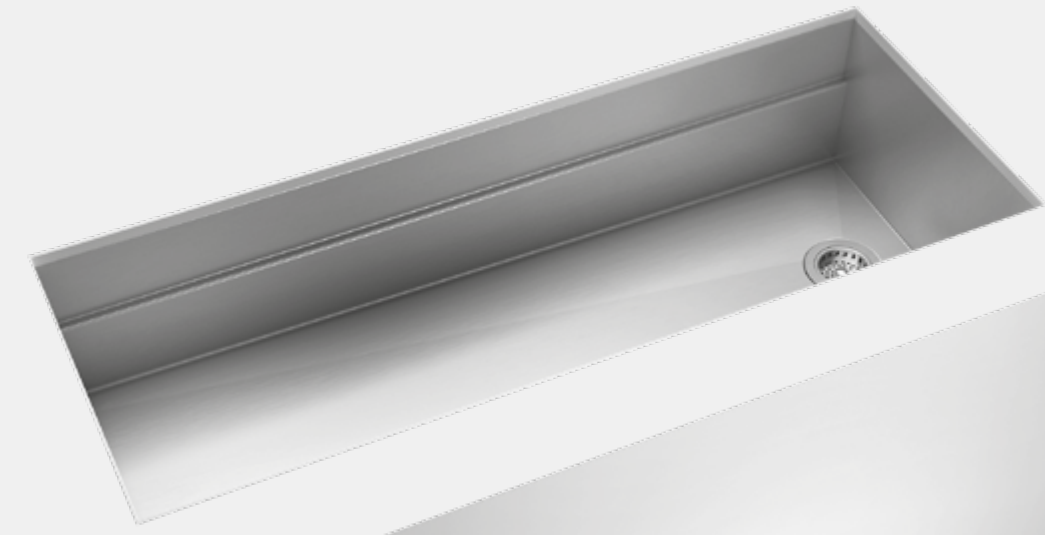
OVERALL (X × Y)
49½" × 20¾"

Sink 005502

BOWL (A × B × C)
48" × 17¼" × 10"



17" FRONT TO BACK SINK



SMARTSTATION SINK

UNDERMOUNT **OVERHANG 1/8"** INSTALLATION

Single bowl



Double bowl



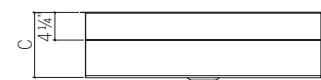
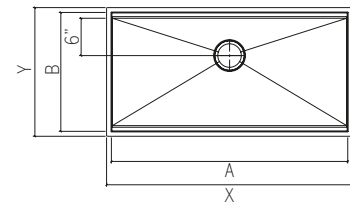
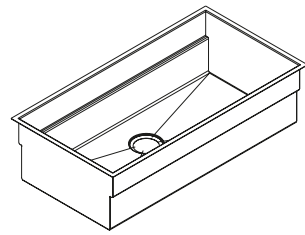
AVAILABLE ACCESSORIES

Refer to page 96 for accessory compatibility

SMARTSTATION SINK

Undermount overhang 1/8" installation

KITCHEN SINK



CABINET 18"



OVERALL (X × Y)
13½" × 19⅝"

Sink 005503

BOWL (A × B × C)
12" × 18" × 10"

CABINET 24"

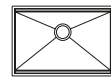


OVERALL (X × Y)
19½" × 19⅝"

Sink 005504

BOWL (A × B × C)
18" × 18" × 10"

CABINET 27"

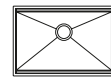


OVERALL (X × Y)
25½" × 19⅝"

Sink 005505

BOWL (A × B × C)
24" × 18" × 10"

CABINET 33"

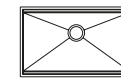


OVERALL (X × Y)
28½" × 19⅝"

Sink 005506

BOWL (A × B × C)
27" × 18" × 10"

CABINET 36"

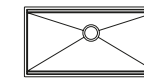


OVERALL (X × Y)
31½" × 19⅝"

Sink 005507

BOWL (A × B × C)
30" × 18" × 10"

CABINET 42"

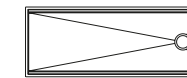


OVERALL (X × Y)
37½" × 19⅝"

Sink 005508

BOWL (A × B × C)
36" × 18" × 10"

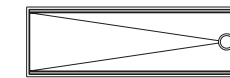
CUSTOM CABINET



OVERALL (X × Y)
49½" × 19⅝"

Sink 005509

BOWL (A × B × C)
48" × 18" × 10"



OVERALL (X × Y)
61½" × 19⅝"

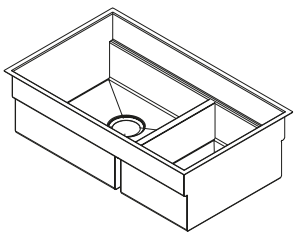
Sink 005510

BOWL (A × B × C)
60" × 18" × 10"

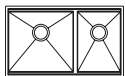
SMARTSTATION SINK

Undermount overhang 1/8" installation

KITCHEN SINK



CABINET 36"

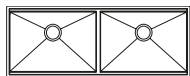


OVERALL (X × Y)
32½" × 19⅝"

Sink 005511

BOWL (A × B × C)
G 18" × 18 × 10"
D 12" × 18 × 10"

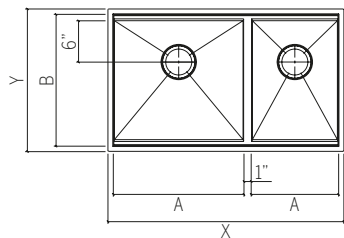
CUSTOM CABINET



OVERALL (X × Y)
50½" × 19⅝"

Sink 005512

BOWL (A × B × C)
G 24" × 18 × 10"
D 24" × 18 × 10"



18" FRONT TO BACK SINK

MEET YOU AT THE SINK

There are many ways to optimize a kitchen: the SocialCorner sink is one of them. We've relocated the sink to one of the corners of the island to provide access from both sides, maximize space and improve flow between workspaces. All sinks in this collection can be customized with À la Carte options.

IN COLLABORATION
WITH DESIGNER
MATTHEW QUINN

Matthew Quinn is an award-winning kitchen and bath designer who stands out for his creative concepts, striving to achieve something Home Refinements values: creating synergy between the environment and its occupants. With this shared goal in mind, Home Refinements' collaboration with Matthew Quinn was launched in the fall of 2014.



SOCIALCORNER

- Designed by Matthew Quinn
- Handcrafted in Canada
- Right angle corners [0mm]
- Commercial quality stainless steel – 16 ga thickness
- Corrosion resistant material – 304 series (18/10)
- Environmentally friendly product, 100% recyclable
- Elegant no. 4 brushed finish that matches the appliances
- Unique island corner installation to allow two people to work at the sink at the same time
- Designed for left or right corner installation
- Highly efficient sound deadening pads
- Practical flat sink bottom and straight bowl sides that maximize available space in the bowl
- Stylish and functional bowl bottom grooves that facilitate water drainage
- Rear 3 1/2" drain placement
- Mounting hardware included
- Certifications: ASME A112.19.3, CSA B45.0, CSA B45.4

A LITTLE *MORE*

Make your sink even more functional by adding one or more À la Carte options.

Visit the À la Carte section for more information



UNDERMOUNT **OVERHANG 1/8"** OR **3/4" REVEAL** INSTALLATION

Left corner



Right corner



AVAILABLE ACCESSORIES

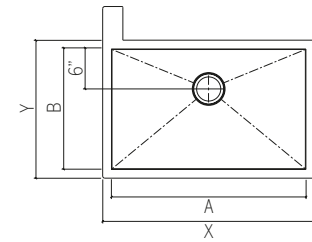
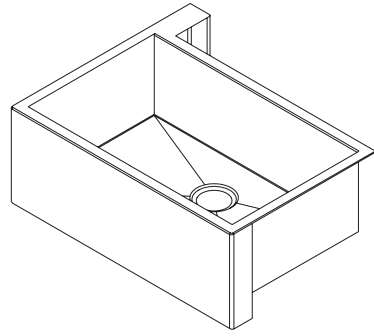
Refer to page 96 for accessory compatibility

SOCIALCORNER

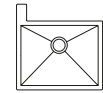
Undermount **overhang 1/8"** or **3/4" reveal** installation with flat aprons

KITCHEN SINK

Installation on left corner of kitchen island



CABINET 24"

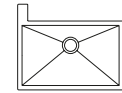


OVERALL (X × Y × Z)
25½" × 25½" × 11¾"

Sink 005300
BOWL (A × B × C)
23" × 18" × 10"

Grid 200933

CABINET 30"

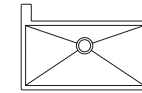


OVERALL (X × Y × Z)
31½" × 25½" × 11¾"

Sink 005302
BOWL (A × B × C)
29" × 18" × 10"

Grid 200934

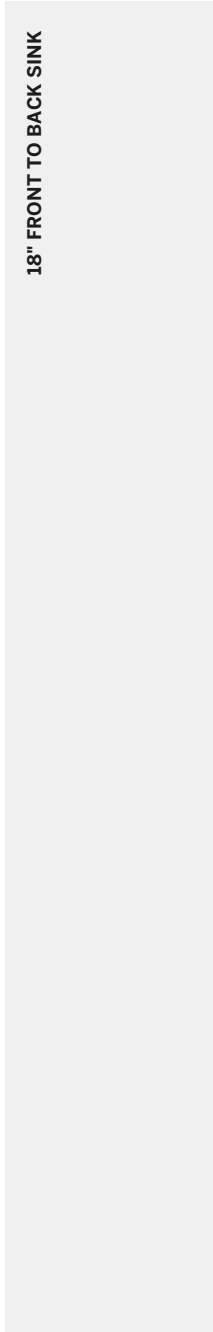
CABINET 36"



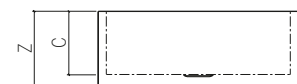
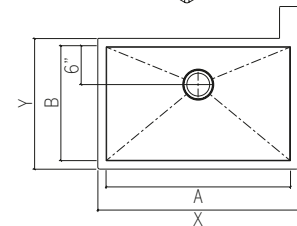
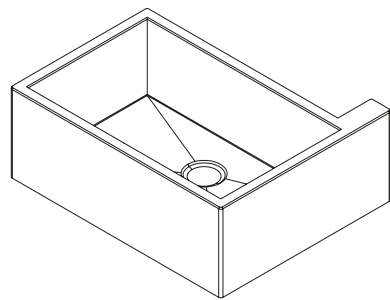
OVERALL (X × Y × Z)
37½" × 25½" × 11¾"

Sink 005304
BOWL (A × B × C)
35" × 18" × 10"

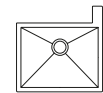
Grid 200935



Installation on right corner of kitchen island



CABINET 24"

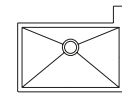


OVERALL (X × Y × Z)
25½" × 25½" × 11¾"

Sink 005301
BOWL (A × B × C)
23" × 18" × 10"

Grid 200933

CABINET 30"

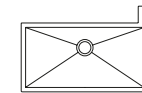


OVERALL (X × Y × Z)
31½" × 25½" × 11¾"

Sink 005303
BOWL (A × B × C)
29" × 18" × 10"

Grid 200934

CABINET 36"



OVERALL (X × Y × Z)
37½" × 25½" × 11¾"

Sink 005305
BOWL (A × B × C)
35" × 18" × 10"

Grid 200935

ALL THE RIGHT *ANGLES*

The UrbanEdge look is unmistakable. Sleek, straight lines and perfectly right angles; the UrbanEdge collection is timeless. It fits beautifully with any modern, minimalist décor, while maximizing bowl space. You'll want to spend more quality time in the kitchen. The kitchen sinks in this collection can be configured with the À la Carte option.



URBANEDGE

- Handcrafted in Canada
- Right angle corners [0mm]
- Commercial quality stainless steel – 16 ga thickness
- Corrosion resistant material – 304 series (18/10)
- Environmentally friendly product, 100% recyclable
- Elegant no. 4 brushed finish that matches the appliances
- Highly efficient sound deadening pads
- Practical flat sink bottom and straight bowl sides that maximize available space in the bowl
- Stylish and functional bowl bottom grooves that facilitate water drainage
- Rear 3 1/2" drain placement – For bar sinks, please refer to the specsheets for drain sizes and placement
- Mounting hardware and cutout template included
- Certifications: ASME A112.19.3, CSA B45.0, CSA B45.4

A LITTLE *MORE*

Make your sink even more functional by adding one or more À la Carte options.

Visit the **À la Carte** section for more information



UNDERMOUNT **OVERHANG 1/8"** INSTALLATION

Kitchen sinks



Bar sinks



Utility sinks

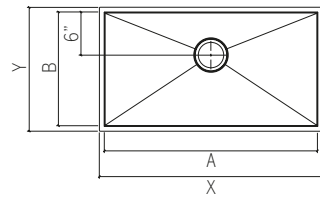
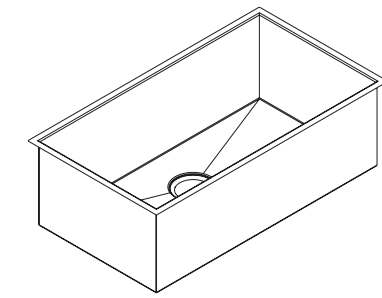


AVAILABLE ACCESSORIES
Refer to page 96 for accessory compatibility

URBANEDGE

Undermount overhang 1/8" installation

KITCHEN SINK



	CABINET 15"	CABINET 18"	CABINET 21"	CABINET 24"	CABINET 27"	CABINET 30"	CABINET 33"	CABINET 36"	CABINET 39"	CABINET 42"
OVERALL (X × Y) 10½" × 17½"	OVERALL (X × Y) 13½" × 17½"	OVERALL (X × Y) 16½" × 17½"	OVERALL (X × Y) 19½" × 17½"	OVERALL (X × Y) 22½" × 17½"	OVERALL (X × Y) 25½" × 17½"	OVERALL (X × Y) 28½" × 17½"	OVERALL (X × Y) 31½" × 17½"	OVERALL (X × Y) 34½" × 17½"	OVERALL (X × Y) 37½" × 17½"	OVERALL (X × Y) 37½" × 17½"
Sink 003601 BOWL (A × B × C) 9" × 16" × 8"	Sink 003602 BOWL (A × B × C) 12" × 16" × 8"	Sink 003603 BOWL (A × B × C) 15" × 16" × 8"	Sink 003604 BOWL (A × B × C) 18" × 16" × 8"	Sink 003606 BOWL (A × B × C) 21" × 16" × 8"	Sink 003610 BOWL (A × B × C) 24" × 16" × 8"	Sink 003611 BOWL (A × B × C) 27" × 16" × 8"	Sink 003615 BOWL (A × B × C) 30" × 16" × 8"	Sink 003670 BOWL (A × B × C) 33" × 16" × 8"	—	—
—	—	—	Sink 003647 BOWL (A × B × C) 18" × 16" × 10"	Sink 003607 BOWL (A × B × C) 21" × 16" × 10"	Sink 003680 BOWL (A × B × C) 24" × 16" × 10"	Sink 003612 BOWL (A × B × C) 27" × 16" × 10"	Sink 003685 BOWL (A × B × C) 30" × 16" × 10"	Sink 003690 BOWL (A × B × C) 33" × 16" × 10"	Sink 003695 BOWL (A × B × C) 36" × 16" × 10"	Sink 003695 BOWL (A × B × C) 36" × 16" × 10"
Grid 200902	Grid 200903	Grid 200904	Grid 200905	Grid 200906	Grid 200907	Grid 200908	Grid 200909	Grid 200910	Grid 200911	Grid 200911
				OVERALL (X × Y) 22½" × 18½"	OVERALL (X × Y) 25½" × 18½"	OVERALL (X × Y) 28½" × 18½"	OVERALL (X × Y) 31½" × 18½"	OVERALL (X × Y) 31½" × 18½"	OVERALL (X × Y) 31½" × 18½"	OVERALL (X × Y) 31½" × 18½"
				Sink 003618 BOWL (A × B × C) 21" × 17" × 10"	Sink 003666 BOWL (A × B × C) 24" × 17" × 10"	Sink 003621 BOWL (A × B × C) 27" × 17" × 10"	Sink 003667 BOWL (A × B × C) 30" × 17" × 10"	Sink 003667 BOWL (A × B × C) 30" × 17" × 10"	Sink 003667 BOWL (A × B × C) 30" × 17" × 10"	Sink 003667 BOWL (A × B × C) 30" × 17" × 10"
				Grid 200912	Grid 200913	Grid 200914	Grid 200915	Grid 200915	Grid 200915	Grid 200915
		OVERALL (X × Y) 16½" × 19½"	OVERALL (X × Y) 19½" × 19½"	OVERALL (X × Y) 22½" × 19½"	OVERALL (X × Y) 25½" × 19½"	OVERALL (X × Y) 28½" × 19½"	OVERALL (X × Y) 31½" × 19½"	OVERALL (X × Y) 34½" × 19½"	OVERALL (X × Y) 37½" × 19½"	OVERALL (X × Y) 37½" × 19½"
		Sink 003626 BOWL (A × B × C) 15" × 18" × 10"	Sink 003627 BOWL (A × B × C) 18" × 18" × 10"	Sink 003628 BOWL (A × B × C) 21" × 18" × 10"	Sink 003629 BOWL (A × B × C) 24" × 18" × 10"	Sink 003631 BOWL (A × B × C) 27" × 18" × 10"	Sink 003672 BOWL (A × B × C) 30" × 18" × 10"	Sink 003633 BOWL (A × B × C) 33" × 18" × 10"	Sink 003634 BOWL (A × B × C) 36" × 18" × 10"	Sink 003634 BOWL (A × B × C) 36" × 18" × 10"
		Grid 200916	Grid 200917	Grid 200918	Grid 200919	Grid 200920	Grid 200921	Grid 200922	Grid 200923	Grid 200923

16" FRONT TO BACK SINK

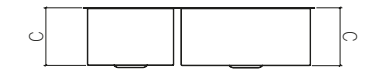
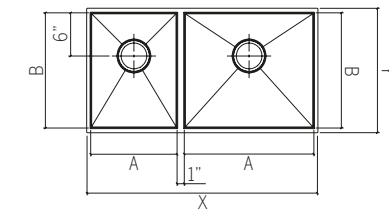
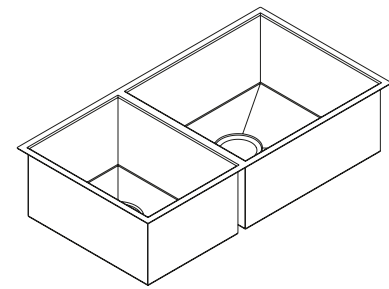
17" FRONT TO BACK SINK

18" FRONT TO BACK SINK

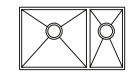
URBANEDGE

Undermount overhang 1/8" installation

KITCHEN SINK



CABINET 33"



OVERALL (X × Y)
29 1/2" × 17 1/2"

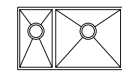
—

Sink 003659
BOWL (A × B × C)
L 18" × 16" × 10"
R 9" × 16" × 8"

Grid 200905 (L)

Grid 200902 (R)

CABINET 36"



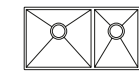
OVERALL (X × Y)
29 1/2" × 17 1/2"

—

Sink 003648
BOWL (A × B × C)
L 9" × 16" × 8"
R 18" × 16" × 10"

Grid 200902 (L)

Grid 200905 (R)



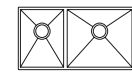
OVERALL (X × Y)
32 1/2" × 17 1/2"

Sink 003677
BOWL (A × B × C)
L 18" × 16" × 8"
R 12" × 16" × 8"

Sink 003658
BOWL (A × B × C)
L 18" × 16" × 10"
R 12" × 16" × 8"

Grid 200905 (L)

Grid 200903 (R)



OVERALL (X × Y)
32 1/2" × 17 1/2"

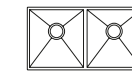
Sink 003678
BOWL (A × B × C)
L 12" × 16" × 8"
R 18" × 16" × 8"

Sink 003649
BOWL (A × B × C)
L 12" × 16" × 8"
R 18" × 16" × 10"

Grid 200903 (L)

Grid 200905 (R)

CABINET 36"



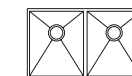
OVERALL (X × Y)
32 1/2" × 17 1/2"

Sink 003653
BOWL (A × B × C)
L 15" × 16" × 8"
R 15" × 16" × 8"

—

Grid 200904 (L)

Grid 200904 (R)



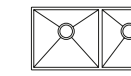
OVERALL (X × Y)
32 1/2" × 19 1/2"

Sink 003637
BOWL (A × B × C)
L 15" × 18" × 10"
R 15" × 18" × 10"

Grid 200916 (L)

Grid 200916 (R)

CABINET 39"



OVERALL (X × Y)
35 1/2" × 17 1/2"

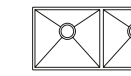
Sink 003679
BOWL (A × B × C)
L 18" × 16" × 8"
R 15" × 16" × 8"

Sink 003657
BOWL (A × B × C)
L 18" × 16" × 10"
R 15" × 16" × 8"

Grid 200905 (L)

Grid 200904 (R)

CABINET 42"



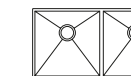
OVERALL (X × Y)
38 1/2" × 17 1/2"

Sink 003682
BOWL (A × B × C)
L 18" × 16" × 8"
R 18" × 16" × 8"

—

Grid 200905 (L)

Grid 200905 (R)



OVERALL (X × Y)
38 1/2" × 19 1/2"

Sink 003642
BOWL (A × B × C)
L 18" × 18" × 10"
R 18" × 18" × 10"

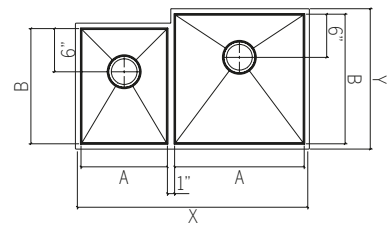
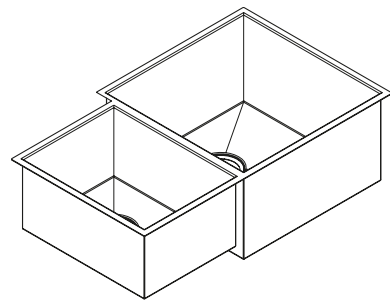
Grid 200917 (L)

Grid 200917 (R)

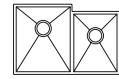
URBANEDGE

Undermount overhang 1/8" installation

KITCHEN SINK



CABINET 33"



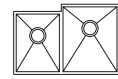
OVERALL (X × Y)
29½" × 19½"

Sink 003652
BOWL (A × B × C)
L 15" × 18" × 10"
R 12" × 16" × 8"

Grid 200916 (L)

Grid 200903 (R)

CABINET 36"

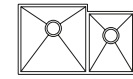


OVERALL (X × Y)
29½" × 19½"

Sink 003651
BOWL (A × B × C)
L 12" × 16" × 8"
R 15" × 18" × 10"

Grid 200903 (L)

Grid 200916 (R)

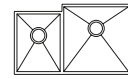


OVERALL (X × Y)
32½" × 19½"

Sink 003638
BOWL (A × B × C)
L 18" × 18" × 10"
R 12" × 16" × 8"

Grid 200917 (L)

Grid 200903 (R)



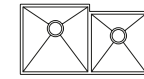
OVERALL (X × Y)
32½" × 19½"

Sink 003639
BOWL (A × B × C)
L 12" × 16" × 8"
R 18" × 18" × 10"

Grid 200903 (L)

Grid 200917 (R)

CABINET 39"

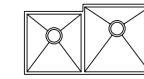


OVERALL (X × Y)
35½" × 19½"

Sink 003640
BOWL (A × B × C)
L 18" × 18" × 10"
R 15" × 16" × 8"

Grid 200917 (L)

Grid 200904 (R)

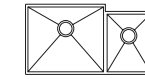


OVERALL (X × Y)
35½" × 19½"

Sink 003641
BOWL (A × B × C)
L 15" × 16" × 8"
R 18" × 18" × 10"

Grid 200904 (L)

Grid 200917 (R)

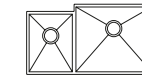


OVERALL (X × Y)
35½" × 19½"

Sink 003643
BOWL (A × B × C)
L 21" × 18" × 10"
R 12" × 16" × 8"

Grid 200918 (L)

Grid 200903 (R)



OVERALL (X × Y)
35½" × 19½"

Sink 003644
BOWL (A × B × C)
L 12" × 16" × 8"
R 21" × 18" × 10"

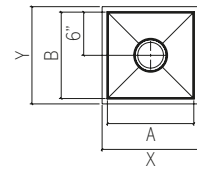
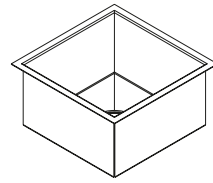
Grid 200903 (L)

Grid 200918 (R)

URBANEDGE

Undermount overhang 1/8" installation

BAR SINKS



CABINET 18"



OVERALL (X × Y)
13½" × 13½"

Sink 003608
BOWL (A × B × C)
12" × 12" × 7"

Sink 003668
BOWL (A × B × C)
12" × 12" × 7"
DRAIN Ø 2"

Grid 200924

CABINET 21"



OVERALL (X × Y)
13½" × 16½"

Sink 003614
BOWL (A × B × C)
12" × 15" × 7"

Sink 003616
BOWL (A × B × C)
12" × 15" × 7"
DRAIN Ø 2"

Grid 200925



OVERALL (X × Y)
16½" × 16½"

Sink 003609
BOWL (A × B × C)
15" × 15" × 7"

Sink 003613
BOWL (A × B × C)
15" × 15" × 7"
DRAIN Ø 2"

Grid 200926

CABINET 24"

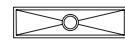


OVERALL (X × Y)
19½" × 8½"

Sink 003617
BOWL (A × B × C)
18" × 7" × 6"

Grid
N/A

CABINET 36"

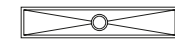


OVERALL (X × Y)
31½" × 8½"

Sink 003619
BOWL (A × B × C)
30" × 7" × 6"

Grid
N/A

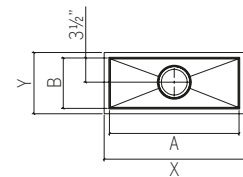
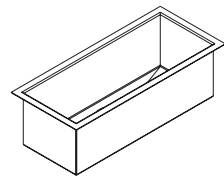
CABINET 48"



OVERALL (X × Y)
43½" × 8½"

Sink 003622
BOWL (A × B × C)
42" × 7" × 6"

Grid
N/A



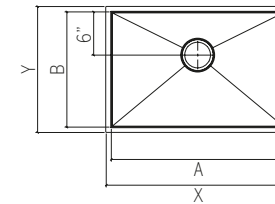
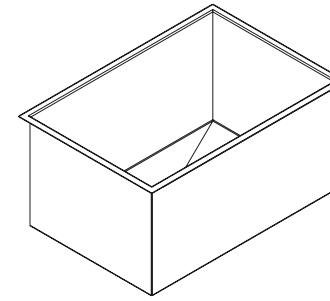
12" AND 15" FRONT TO BACK SINKS

7" FRONT TO BACK SINK

URBANEDGE

Undermount overhang 1/8" installation

UTILITY SINKS



CABINET 27"



OVERALL (X × Y)
22½" × 17½"

Sink 003673
BOWL (A × B × C)
21" × 16" × 12"

Grid 200906

CABINET 30"



OVERALL (X × Y)
25½" × 17½"

Sink 003674
BOWL (A × B × C)
24" × 16" × 12"

Grid 200907

CABINET 36"



OVERALL (X × Y)
31½" × 17½"

Sink 003676
BOWL (A × B × C)
30" × 16" × 12"

Grid 200909

16" FRONT TO BACK SINK

EFFORTLESS *BEAUTY*

Just round enough to make cleaning a breeze while still maintaining contemporary lines, the J7 sink collection achieves a perfect balance of form and function. A versatile design that is perfect for both minimalist and classic décors. The kitchen sinks in this collection can be configured with the À la Carte options.





J7

- Handcrafted in Canada
- Slightly rounded corners [7mm]
- Commercial quality stainless steel – 16 ga thickness
- Corrosion resistant material – 304 series (18/10)
- Environmentally friendly product, 100% recyclable
- Elegant no. 4 brushed finish that matches the appliances
- Highly efficient sound deadening pads
- Practical flat sink bottom and straight bowl sides that maximize available space in the bowl
- Stylish and functional bowl bottom grooves that facilitate water drainage
- Rear 3 1/2" drain placement – For bar sinks, please refer to the specsheets for drain sizes and placement
- Mounting hardware and cutout template included Included
- Certifications: ASME A112.19.3, CSA B45.0, CSA B45.4

UNDERMOUNT OVERHANG 1/8" INSTALLATION

Kitchen sinks



Bar sinks



Utility sinks



A LITTLE MORE

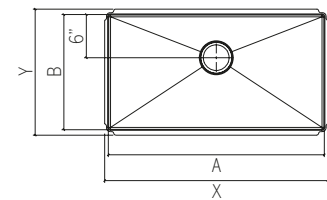
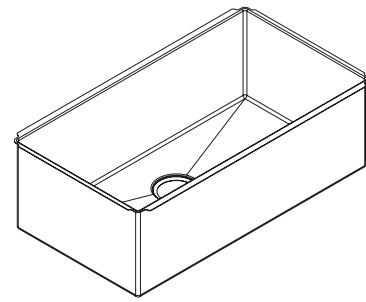
Make your sink even more functional by adding one or more À la Carte options.

Visit the **À la Carte** section for more information



AVAILABLE ACCESSORIES
Refer to page 96 for accessory compatibility

KITCHEN SINK



CABINET 15"	CABINET 18"	CABINET 21"	CABINET 24"	CABINET 27"	CABINET 30"	CABINET 33"	CABINET 36"	CABINET 39"	CABINET 42"
OVERALL (X × Y) 10½" × 17½"	OVERALL (X × Y) 13½" × 17½"	OVERALL (X × Y) 16½" × 17½"	OVERALL (X × Y) 19½" × 17½"	OVERALL (X × Y) 22½" × 17½"	OVERALL (X × Y) 25½" × 17½"	OVERALL (X × Y) 28½" × 17½"	OVERALL (X × Y) 31½" × 17½"	OVERALL (X × Y) 34½" × 17½"	OVERALL (X × Y) 37½" × 17½"
Sink 003903 BOWL (A × B × C) 9" × 16" × 8"	Sink 003907 BOWL (A × B × C) 12" × 16" × 8"	Sink 003909 BOWL (A × B × C) 15" × 16" × 8"	Sink 003912 BOWL (A × B × C) 18" × 16" × 8"	Sink 003913 BOWL (A × B × C) 21" × 16" × 8"	Sink 003910 BOWL (A × B × C) 24" × 16" × 8"	Sink 003919 BOWL (A × B × C) 27" × 16" × 8"	Sink 003915 BOWL (A × B × C) 30" × 16" × 8"	Sink 003995 BOWL (A × B × C) 33" × 16" × 8"	—
—	—	—	Sink 003981 BOWL (A × B × C) 18" × 16" × 10"	Sink 003914 BOWL (A × B × C) 21" × 16" × 10"	Sink 003918 BOWL (A × B × C) 24" × 16" × 10"	Sink 003922 BOWL (A × B × C) 27" × 16" × 10"	Sink 003908 BOWL (A × B × C) 30" × 16" × 10"	Sink 003927 BOWL (A × B × C) 33" × 16" × 10"	Sink 003928 BOWL (A × B × C) 36" × 16" × 10"
Grid 200902	Grid 200903	Grid 200904	Grid 200905	Grid 200906	Grid 200907	Grid 200908	Grid 200909	Grid 200910	Grid 200911
				OVERALL (X × Y) 22½" × 18½"	OVERALL (X × Y) 25½" × 18½"	OVERALL (X × Y) 28½" × 18½"	OVERALL (X × Y) 31½" × 18½"		
				Sink 003929 BOWL (A × B × C) 21" × 17" × 10"	Sink 003920 BOWL (A × B × C) 24" × 17" × 10"	Sink 003932 BOWL (A × B × C) 27" × 17" × 10"	Sink 003925 BOWL (A × B × C) 30" × 17" × 10"		
				Grid 200912	Grid 200913	Grid 200914	Grid 200915		
		OVERALL (X × Y) 16½" × 19½"	OVERALL (X × Y) 19½" × 19½"	OVERALL (X × Y) 22½" × 19½"	OVERALL (X × Y) 25½" × 19½"	OVERALL (X × Y) 28½" × 19½"	OVERALL (X × Y) 31½" × 19½"	OVERALL (X × Y) 34½" × 19½"	OVERALL (X × Y) 37½" × 19½"
		Sink 003937 BOWL (A × B × C) 15" × 18" × 10"	Sink 003938 BOWL (A × B × C) 18" × 18" × 10"	Sink 003939 BOWL (A × B × C) 21" × 18" × 10"	Sink 003941 BOWL (A × B × C) 24" × 18" × 10"	Sink 003942 BOWL (A × B × C) 27" × 18" × 10"	Sink 003935 BOWL (A × B × C) 30" × 18" × 10"	Sink 003944 BOWL (A × B × C) 33" × 18" × 10"	Sink 003946 BOWL (A × B × C) 36" × 18" × 10"
		Grid 200916	Grid 200917	Grid 200918	Grid 200919	Grid 200920	Grid 200921	Grid 200922	Grid 200923

16" FRONT TO BACK SINK

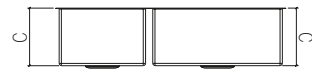
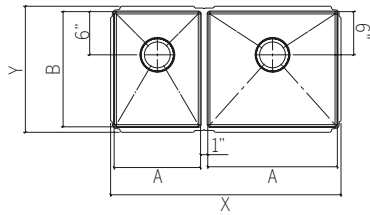
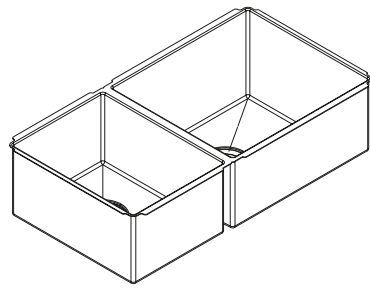
17" FRONT TO BACK SINK

18" FRONT TO BACK SINK

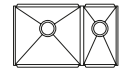
J7

Undermount overhang 1/8" installation

KITCHEN SINK



CABINET 33"



OVERALL (X × Y)
29 1/2" × 17 1/2"

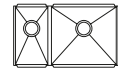
—

Sink 003989
BOWL (A × B × C)
G 18" × 16" × 10"
D 9" × 16" × 8"

Grid 200905 (L)

Grid 200902 (R)

CABINET 36"



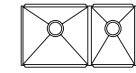
OVERALL (X × Y)
29 1/2" × 17 1/2"

—

Sink 003982
BOWL (A × B × C)
G 9" × 16" × 8"
D 18" × 16" × 10"

Grid 200902 (L)

Grid 200905 (R)



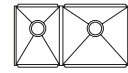
OVERALL (X × Y)
32 1/2" × 17 1/2"

Sink 003934
BOWL (A × B × C)
G 18" × 16" × 8"
D 12" × 16" × 8"

Sink 003991
BOWL (A × B × C)
G 18" × 16" × 10"
D 12" × 16" × 8"

Grid 200905 (L)

Grid 200903 (R)



OVERALL (X × Y)
32 1/2" × 17 1/2"

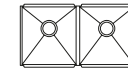
Sink 003936
BOWL (A × B × C)
G 12" × 16" × 8"
D 18" × 16" × 8"

Sink 003983
BOWL (A × B × C)
G 12" × 16" × 8"
D 18" × 16" × 10"

Grid 200903 (L)

Grid 200905 (R)

CABINET 36"



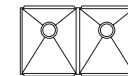
OVERALL (X × Y)
32 1/2" × 17 1/2"

Sink 003987
BOWL (A × B × C)
G 15" × 16" × 8"
D 15" × 16" × 8"

—

Grid 200904 (L)

Grid 200904 (R)



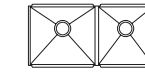
OVERALL (X × Y)
32 1/2" × 19 1/2"

Sink 003949
BOWL (A × B × C)
G 15" × 18" × 10"
D 15" × 18" × 10"

Grid 200916 (L)

Grid 200916 (R)

CABINET 39"



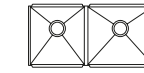
OVERALL (X × Y)
35 1/2" × 17 1/2"

Sink 003947
BOWL (A × B × C)
G 18" × 16" × 8"
D 15" × 16" × 8"

Sink 003992
BOWL (A × B × C)
G 18" × 16" × 10"
D 15" × 16" × 8"

Grid 200905 (L)

Grid 200904 (R)



OVERALL (X × Y)
35 1/2" × 17 1/2"

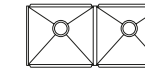
Sink 003948
BOWL (A × B × C)
G 15" × 16" × 8"
D 18" × 16" × 8"

Sink 003986
BOWL (A × B × C)
G 15" × 16" × 8"
D 18" × 16" × 10"

Grid 200904 (L)

Grid 200905 (R)

CABINET 42"



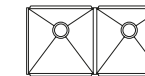
OVERALL (X × Y)
38 1/2" × 17 1/2"

Sink 003963
BOWL (A × B × C)
G 18" × 16" × 8"
D 18" × 16" × 8"

—

Grid 200905 (L)

Grid 200905 (R)



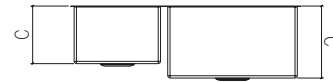
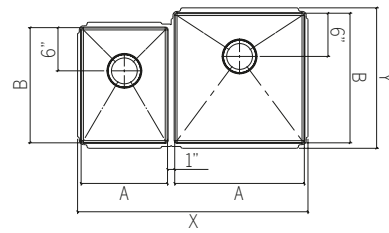
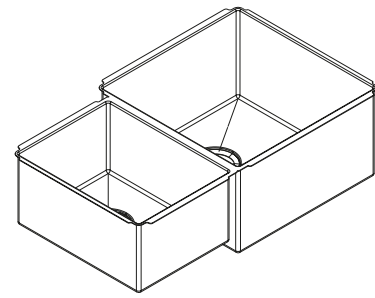
OVERALL (X × Y)
38 1/2" × 19 1/2"

Sink 003958
BOWL (A × B × C)
G 18" × 18" × 10"
D 18" × 18" × 10"

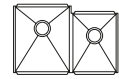
Grid 200917 (L)

Grid 200917 (R)

KITCHEN SINK



CABINET 33"



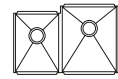
OVERALL (X × Y)
29½" × 19½"

Sink 003988
BOWL (A × B × C)
G 15" × 18" × 10"
D 12" × 16" × 8"

Grid 200916 (L)

Grid 200903 (R)

CABINET 36"

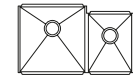


OVERALL (X × Y)
29½" × 19½"

Sink 003984
BOWL (A × B × C)
G 12" × 16" × 8"
D 15" × 18" × 10"

Grid 200903 (L)

Grid 200916 (R)

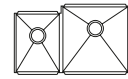


OVERALL (X × Y)
32½" × 19½"

Sink 003952
BOWL (A × B × C)
G 18" × 18" × 10"
D 12" × 16" × 8"

Grid 200917 (L)

Grid 200903 (R)



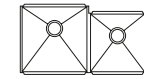
OVERALL (X × Y)
32½" × 19½"

Sink 003953
BOWL (A × B × C)
G 12" × 16" × 8"
D 18" × 18" × 10"

Grid 200903 (L)

Grid 200917 (R)

CABINET 39"

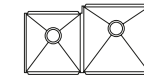


OVERALL (X × Y)
35½" × 19½"

Sink 003954
BOWL (A × B × C)
G 18" × 18" × 10"
D 15" × 16" × 8"

Grid 200917 (L)

Grid 200904 (R)

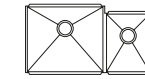


OVERALL (X × Y)
35½" × 19½"

Sink 003957
BOWL (A × B × C)
G 15" × 16" × 8"
D 18" × 18" × 10"

Grid 200904 (L)

Grid 200917 (R)

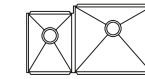


OVERALL (X × Y)
35½" × 19½"

Sink 003959
BOWL (A × B × C)
G 21" × 18" × 10"
D 12" × 16" × 8"

Grid 200918 (L)

Grid 200903 (R)



OVERALL (X × Y)
35½" × 19½"

Sink 003962
BOWL (A × B × C)
G 12" × 16" × 8"
D 21" × 18" × 10"

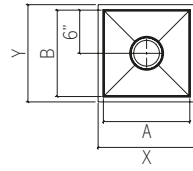
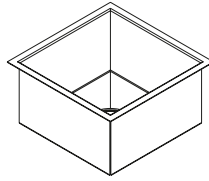
Grid 200903 (L)

Grid 200918 (R)

J7

Undermount overhang 1/8" installation

BAR SINKS



CABINET 18"



OVERALL (X × Y)
13½" × 13½"

Sink 003917
BOWL (A × B × C)
12" × 12" × 7"

Sink 003923
BOWL (A × B × C)
12" × 12" × 7"
DRAIN Ø 2"

Grid 200924

CABINET 21"



OVERALL (X × Y)
13½" × 16½"

Sink 003933
BOWL (A × B × C)
12" × 15" × 7"

Sink 003943
BOWL (A × B × C)
12" × 15" × 7"
DRAIN Ø 2"

Grid 200925



OVERALL (X × Y)
16½" × 16½"

Sink 003924
BOWL (A × B × C)
15" × 15" × 7"

Sink 003931
BOWL (A × B × C)
15" × 15" × 7"
DRAIN Ø 2"

Grid 200926

CABINET 24"

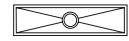


OVERALL (X × Y)
19½" × 8½"

Sink 003967
BOWL (A × B × C)
18" × 7" × 6"

Grid
N/A

CABINET 36"

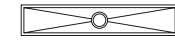


OVERALL (X × Y)
31½" × 8½"

Sink 003968
BOWL (A × B × C)
30" × 7" × 6"

Grid
N/A

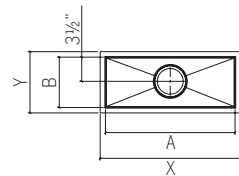
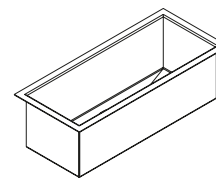
CABINET 48"



OVERALL (X × Y)
43½" × 8½"

Sink 003969
BOWL (A × B × C)
42" × 7" × 6"

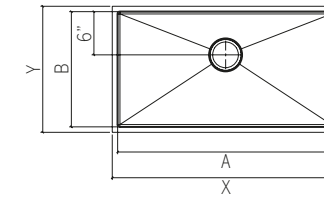
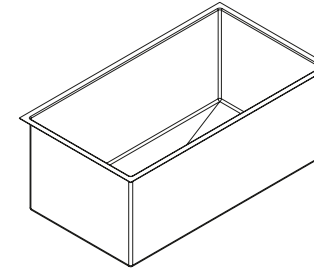
Grid
N/A



J7

Undermount overhang 1/8" installation

UTILITY SINKS



CABINET 27"



OVERALL (X × Y)
22½" × 17½"

Sink 003972
BOWL (A × B × C)
21" × 16" × 12"

Grid 200906

CABINET 30"



OVERALL (X × Y)
25½" × 17½"

Sink 003973
BOWL (A × B × C)
24" × 16" × 12"

Grid 200907

CABINET 36"



OVERALL (X × Y)
31½" × 17½"

Sink 003974
BOWL (A × B × C)
30" × 16" × 12"

Grid 200909

12" AND 15" FRONT TO BACK SINKS

7" FRONT TO BACK SINK

16" FRONT TO BACK SINK

TRIED AND TRUE

The sink of choice for a professional kitchen, the Classic collection is exactly that. Perfectly rounded corners that are a breeze to clean and a simple, thoughtful design that blends seamlessly with any kitchen worthy of the greatest chef.



CLASSIC

- Handcrafted in Canada
- Perfectly rounded corners [29mm]
- Commercial quality stainless steel – 16 ga thickness
- Corrosion resistant material – 304 series (18/10)
- Environmentally friendly product, 100% recyclable
- Elegant no. 4 brushed finish that matches the appliances
- Highly efficient sound deadening pads
- Practical flat sink bottom and straight bowl sides that maximize available space in the bowl
- Stylish and functional bowl bottom grooves that facilitate water drainage
- Rear 3 1/2" drain placement – For bar sinks, please refer to the specsheets for drain sizes and placement
- Mounting hardware and cutout template included Included
- Certifications: ASME A112.19.3, CSA B45.0, CSA B45.4

A LITTLE *MORE*

Make your sink even more functional by adding one or more À la Carte options.

Visit the **À la Carte** section for more information



UNDERMOUNT **OVERHANG 1/8"** INSTALLATION

Kitchen sinks



Bar sink

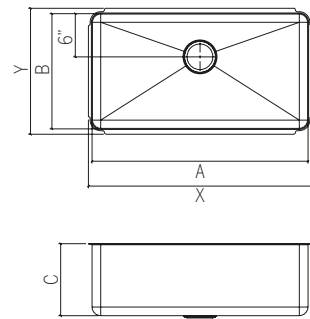
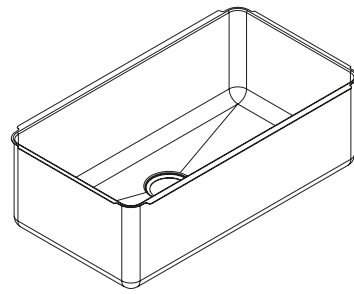


AVAILABLE ACCESSORIES
Refer to page 96 for accessory compatibility

CLASSIC

Undermount overhang 1/8" installation

KITCHEN SINK



CABINET 15"	CABINET 18"	CABINET 21"	CABINET 24"	CABINET 27"	CABINET 30"	CABINET 33"	CABINET 36"	CABINET 39"	CABINET 42"
OVERALL (X × Y) 10½" × 17½"	OVERALL (X × Y) 13½" × 17½"	OVERALL (X × Y) 16½" × 17½"	OVERALL (X × Y) 19½" × 17½"	OVERALL (X × Y) 22½" × 17½"	OVERALL (X × Y) 25½" × 17½"	OVERALL (X × Y) 28½" × 17½"	OVERALL (X × Y) 31½" × 17½"	OVERALL (X × Y) 34½" × 17½"	OVERALL (X × Y) 37½" × 17½"
Sink 003202 BOWL (A × B × C) 9" × 16" × 8"	Sink 003203 BOWL (A × B × C) 12" × 16" × 8"	Sink 003204 BOWL (A × B × C) 15" × 16" × 8"	Sink 003205 BOWL (A × B × C) 18" × 16" × 8"	Sink 003206 BOWL (A × B × C) 21" × 16" × 8"	Sink 003285 BOWL (A × B × C) 24" × 16" × 8"	Sink 003210 BOWL (A × B × C) 27" × 16" × 8"	Sink 003240 BOWL (A × B × C) 30" × 16" × 8"	Sink 003284 BOWL (A × B × C) 33" × 16" × 8"	—
—	—	—	Sink 003244 BOWL (A × B × C) 18" × 16" × 10"	Sink 003207 BOWL (A × B × C) 21" × 16" × 10"	Sink 003209 BOWL (A × B × C) 24" × 16" × 10"	Sink 003211 BOWL (A × B × C) 27" × 16" × 10"	Sink 003213 BOWL (A × B × C) 30" × 16" × 10"	Sink 003214 BOWL (A × B × C) 33" × 16" × 10"	Sink 003215 BOWL (A × B × C) 36" × 16" × 10"
Grid 200902	Grid 200903	Grid 200904	Grid 200905	Grid 200906	Grid 200907	Grid 200908	Grid 200909	Grid 200910	Grid 200911
				OVERALL (X × Y) 22½" × 18½"	OVERALL (X × Y) 25½" × 18½"	OVERALL (X × Y) 28½" × 18½"	OVERALL (X × Y) 31½" × 18½"		
				Sink 003216 BOWL (A × B × C) 21" × 17" × 10"	Sink 003217 BOWL (A × B × C) 24" × 17" × 10"	Sink 003218 BOWL (A × B × C) 27" × 17" × 10"	Sink 003235 BOWL (A × B × C) 30" × 17" × 10"		
				Grid 200912	Grid 200913	Grid 200914	Grid 200915		
		OVERALL (X × Y) 16½" × 19½"	OVERALL (X × Y) 19½" × 19½"	OVERALL (X × Y) 22½" × 19½"	OVERALL (X × Y) 25½" × 19½"	OVERALL (X × Y) 28½" × 19½"	OVERALL (X × Y) 31½" × 19½"	OVERALL (X × Y) 34½" × 19½"	OVERALL (X × Y) 37½" × 19½"
		Sink 003222 BOWL (A × B × C) 15" × 18" × 10"	Sink 003258 BOWL (A × B × C) 18" × 18" × 10"	Sink 003224 BOWL (A × B × C) 21" × 18" × 10"	Sink 003280 BOWL (A × B × C) 24" × 18" × 10"	Sink 003226 BOWL (A × B × C) 27" × 18" × 10"	Sink 003290 BOWL (A × B × C) 30" × 18" × 10"	Sink 003259 BOWL (A × B × C) 33" × 18" × 10"	Sink 003257 BOWL (A × B × C) 36" × 18" × 10"
		Grid 200916	Grid 200917	Grid 200918	Grid 200919	Grid 200920	Grid 200921	Grid 200922	Grid 200923

16" FRONT TO BACK SINK

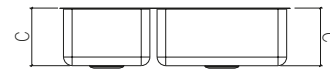
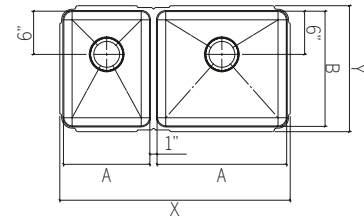
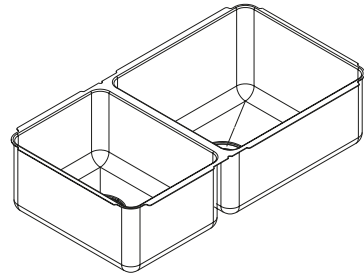
17" FRONT TO BACK SINK

18" FRONT TO BACK SINK

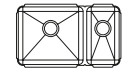
CLASSIC

Undermount overhang 1/8" installation

KITCHEN SINK



CABINET 33"



OVERALL (X × Y)
29½" × 17½"

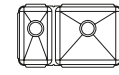
—

Sink 003256
BOWL (A × B × C)
G 18" × 16" × 10"
D 9" × 16" × 8"

Grid 200905 (L)

Grid 200902 (R)

CABINET 36"



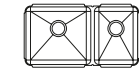
OVERALL (X × Y)
29½" × 17½"

—

Sink 003246
BOWL (A × B × C)
G 9" × 16" × 8"
D 18" × 16" × 10"

Grid 200902 (L)

Grid 200905 (R)



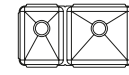
OVERALL (X × Y)
32½" × 17½"

Sink 003277
BOWL (A × B × C)
G 18" × 16" × 8"
D 12" × 16" × 8"

Sink 003254
BOWL (A × B × C)
G 18" × 16" × 10"
D 12" × 16" × 8"

Grid 200905 (L)

Grid 200903 (R)



OVERALL (X × Y)
32½" × 17½"

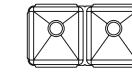
Sink 003278
BOWL (A × B × C)
G 12" × 16" × 8"
D 18" × 16" × 8"

Sink 003248
BOWL (A × B × C)
G 12" × 16" × 8"
D 18" × 16" × 10"

Grid 200903 (L)

Grid 200905 (R)

CABINET 36"



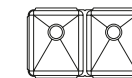
OVERALL (X × Y)
32½" × 17½"

Sink 003251
BOWL (A × B × C)
G 15" × 16" × 8"
D 15" × 16" × 8"

—

Grid 200904 (L)

Grid 200904 (R)



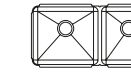
OVERALL (X × Y)
32½" × 19½"

Sink 003232
BOWL (A × B × C)
G 15" × 18" × 10"
D 15" × 18" × 10"

Grid 200916 (L)

Grid 200916 (R)

CABINET 39"



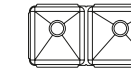
OVERALL (X × Y)
35½" × 17½"

Sink 003281
BOWL (A × B × C)
G 18" × 16" × 8"
D 15" × 16" × 8"

Sink 003253
BOWL (A × B × C)
G 18" × 16" × 10"
D 15" × 16" × 8"

Grid 200905 (L)

Grid 200904 (R)



OVERALL (X × Y)
35½" × 17½"

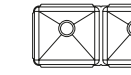
Sink 003282
BOWL (A × B × C)
G 15" × 16" × 8"
D 18" × 16" × 8"

Sink 003249
BOWL (A × B × C)
G 15" × 16" × 8"
D 18" × 16" × 10"

Grid 200904 (L)

Grid 200905 (R)

CABINET 42"



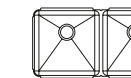
OVERALL (X × Y)
38½" × 17½"

Sink 003283
BOWL (A × B × C)
G 18" × 16" × 8"
D 18" × 16" × 8"

—

Grid 200905 (L)

Grid 200905 (R)



OVERALL (X × Y)
38½" × 19½"

Sink 003238
BOWL (A × B × C)
G 18" × 18" × 10"
D 18" × 18" × 10"

Grid 200917 (L)

Grid 200917 (R)

16" FRONT TO BACK SINK

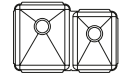
18" FRONT TO BACK SINK

CLASSIC

Undermount overhang 1/8" installation

KITCHEN SINK

CABINET 33"

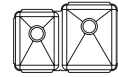


OVERALL (X × Y)
29½" × 19½"

Sink 003252
BOWL (A × B × C)
G 15" × 18" × 10"
D 12" × 16" × 8"

Grid 200916 (L)

Grid 200903 (R)



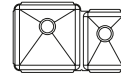
OVERALL (X × Y)
29½" × 19½"

Sink 003247
BOWL (A × B × C)
G 12" × 16" × 8"
D 15" × 18" × 10"

Grid 200903 (L)

Grid 200916 (R)

CABINET 36"

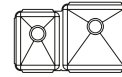


OVERALL (X × Y)
32½" × 19½"

Sink 003233
BOWL (A × B × C)
G 18" × 18" × 10"
D 12" × 16" × 8"

Grid 200917 (L)

Grid 200903 (R)



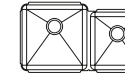
OVERALL (X × Y)
32½" × 19½"

Sink 003234
BOWL (A × B × C)
G 12" × 16" × 8"
D 18" × 18" × 10"

Grid 200903 (L)

Grid 200917 (R)

CABINET 39"

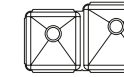


OVERALL (X × Y)
35½" × 19½"

Sink 003236
BOWL (A × B × C)
G 18" × 18" × 10"
D 15" × 16" × 8"

Grid 200917 (L)

Grid 200904 (R)

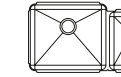


OVERALL (X × Y)
35½" × 19½"

Sink 003237
BOWL (A × B × C)
G 15" × 16" × 8"
D 18" × 18" × 10"

Grid 200904 (L)

Grid 200917 (R)

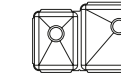


OVERALL (X × Y)
35½" × 19½"

Sink 003239
BOWL (A × B × C)
G 21" × 18" × 10"
D 12" × 16" × 8"

Grid 200918 (L)

Grid 200903 (R)

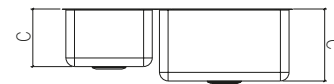
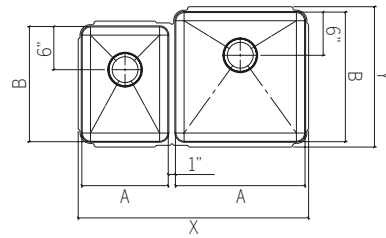
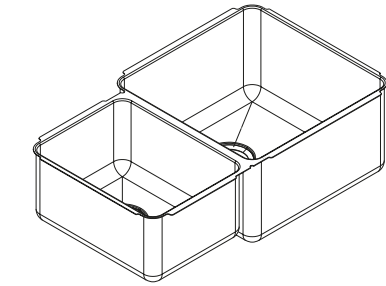


OVERALL (X × Y)
35½" × 19½"

Sink 003241
BOWL (A × B × C)
G 12" × 16" × 8"
D 21" × 18" × 10"

Grid 200903 (L)

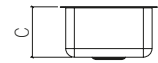
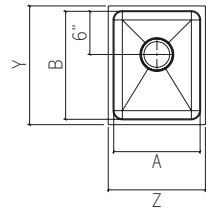
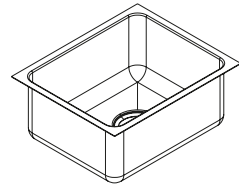
Grid 200918 (R)



CLASSIC

Undermount overhang 1/8" installation

BAR SINKS



CABINET 18"



OVERALL (X × Y)
13½" × 13½"

Sink 003212
BOWL (A × B × C)
12" × 12" × 7"

Sink 003219
BOWL (A × B × C)
12" × 12" × 7"
DRAIN Ø 2"

Grid 200924

CABINET 21"



OVERALL (X × Y)
13½" × 16½"

Sink 003228
BOWL (A × B × C)
12" × 15" × 7"

Sink 003229
BOWL (A × B × C)
12" × 15" × 7"
DRAIN Ø 2"

Grid 200925

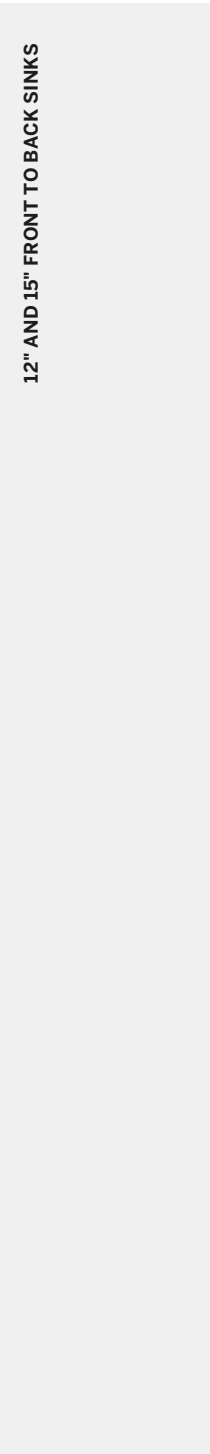


OVERALL (X × Y)
16½" × 16½"

Sink 003225
BOWL (A × B × C)
15" × 15" × 7"

Sink 003227
BOWL (A × B × C)
15" × 15" × 7"
DRAIN Ø 2"

Grid 200926



STAINLESS STEEL ACCESSORIES

CATALOG

HOME REFINEMENTS BY JULIEN

A HELPING *HAND* FOR YOUR SINK

From drains, grids, colanders, and cutting boards, there are many ways to upgrade your Home Refinements sink. These accessories, as beautiful as they are functional, work like a charm.

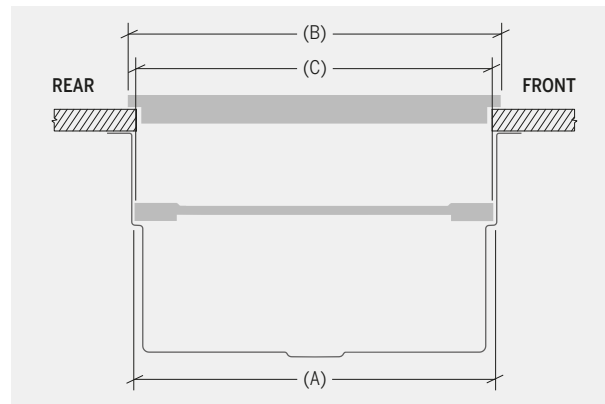


ACCESSORY COMPATIBILITY

The measurements of levels (B) and (C) refer to the front-to-back dimension of the accessory.

SMARTSTATION

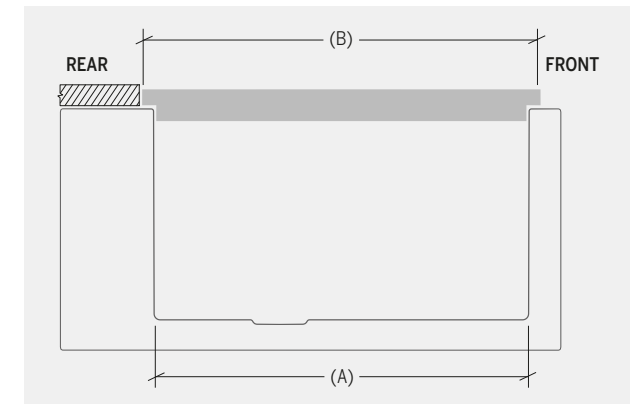
BOWL FRONT TO BACK (A)	COMPATIBLE ACCESSORIES	
	UPPER LEVEL (B)	LOWER LEVEL (C)
18"	19"	18"



SOCIALCORNER

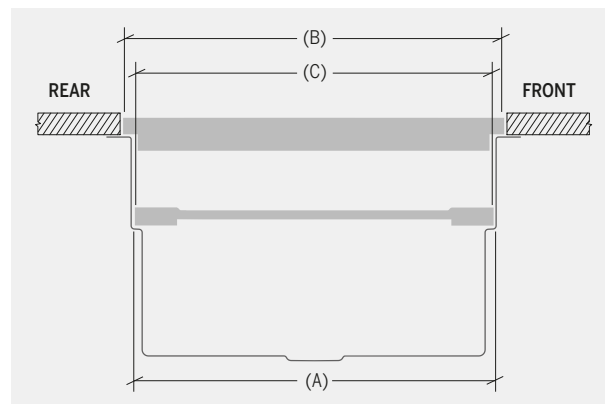
BOWL FRONT TO BACK (A)	COMPATIBLE ACCESSORIES	
	UPPER LEVEL (B)	LOWER LEVEL (C)
18"	19"	N/A

*Accessories cannot be used when the sink is installed as an undermount overhang 1/8".



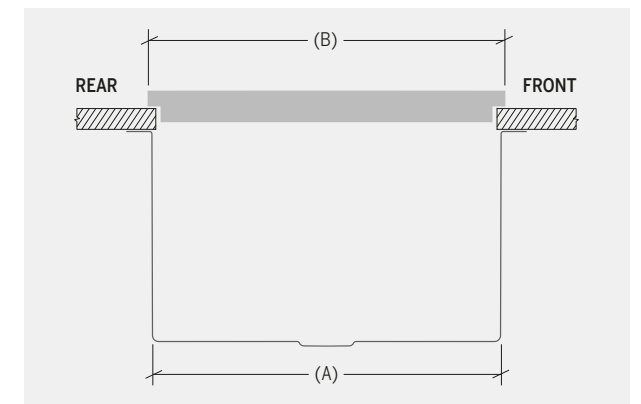
SMARTSTATION REV10

BOWL FRONT TO BACK (A)	COMPATIBLE ACCESSORIES	
	UPPER LEVEL (B)	LOWER LEVEL (C)
17 1/4"	18"	17"



URBANEDGE | J7 | CLASSIC

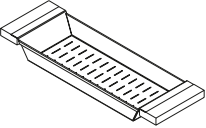
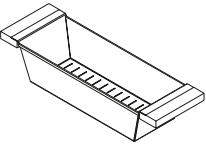
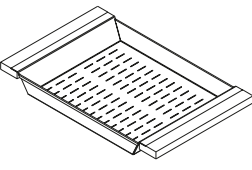

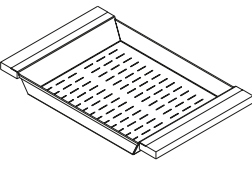

BOWL FRONT TO BACK (A)	COMPATIBLE ACCESSORIES	
	UPPER LEVEL (B)	LOWER LEVEL (C)
16"	17"	N/A
17"	18"	N/A
18"	19"	N/A



COLANDERS

FOR STAINLESS STEEL SINKS

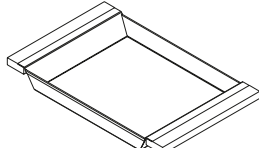
- Can be used on top of sink to create extra workspace or on countertop
- Ideal to rinse food or to dry dishes
- Innovative and functional design to match with other standard Home Refinements accessories
- 100% premium maple or walnut handles for high quality and durability
- Rubber-tipped footings for better stability and protection
- 304 series stainless steel (18/10)
- Elegant no. 4 brushed finish that matches the appliances

	HANDLES	BOWL (FRONT-TO-BACK)	DIMENSIONS	COLANDER
	Maple	16"	6" x 17" x 2¼"	205317
		17"	6" x 18" x 2¼"	205318
		18"	6" x 19" x 2¼"	205319
	Walnut	16"	6" x 17" x 2¼"	205217
		17"	6" x 18" x 2¼"	205218
		18"	6" x 19" x 2¼"	205219
	Maple	16"	6" x 17" x 4¼"	205323
		17"	6" x 18" x 4¼"	205324
		18"	6" x 19" x 4¼"	205325
	Walnut	16"	6" x 17" x 4¼"	205223
		17"	6" x 18" x 4¼"	205224
		18"	6" x 19" x 4¼"	205225
	Maple	16"	12" x 17" x 2¼"	205329
		17"	12" x 18" x 2¼"	205330
		18"	12" x 19" x 2¼"	205331
	Walnut	16"	12" x 17" x 2¼"	205229
		17"	12" x 18" x 2¼"	205230
		18"	12" x 19" x 2¼"	205231

TRAYS

FOR STAINLESS STEEL SINKS

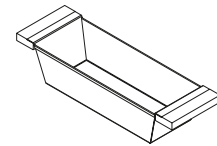
- Can be used on top of sink to create extra workspace or on countertop
- Ideal to prepare or to serve food
- Innovative and functional design to match with other standard Home Refinements accessories
- 100% premium maple or walnut handles for high quality and durability
- Rubber-tipped footings for better stability and protection
- 304 series stainless steel (18/10)
- Elegant no. 4 brushed finish that matches the appliances

	HANDLES	BOWL (FRONT-TO-BACK)	DIMENSIONS	TRAY
	Maple	16"	6" x 17" x 2¼"	205320
		17"	6" x 18" x 2¼"	205321
		18"	6" x 19" x 2¼"	205322
	Walnut	16"	6" x 17" x 2¼"	205220
		17"	6" x 18" x 2¼"	205221
		18"	6" x 19" x 2¼"	205222
	Maple	16"	12" x 17" x 2¼"	205332
		17"	12" x 18" x 2¼"	205333
		18"	12" x 19" x 2¼"	205334
	Walnut	16"	12" x 17" x 2¼"	205232
		17"	12" x 18" x 2¼"	205233
		18"	12" x 19" x 2¼"	205234

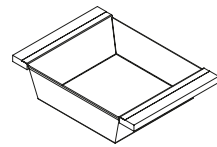
BINS

FOR STAINLESS STEEL SINKS

- Can be used on top of sink to create extra workspace or on countertop
- Ideal to prepare or to serve food or to use as ice bin to cool drinks
- Innovative and functional design to match with other standard Home Refinements accessories
- 100% premium maple or walnut handles for high quality and durability
- Rubber-tipped footings for better stability and protection
- 304 series stainless steel (18/10)
- Elegant no. 4 brushed finish that matches the appliances



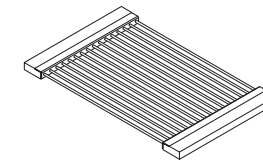
HANDLES	BOWL (FRONT-TO-BACK)	DIMENSIONS	BIN
Maple	16"	6" x 17" x 4¼"	205326
	17"	6" x 18" x 4¼"	205327
	18"	6" x 19" x 4¼"	205328
Walnut	16"	6" x 17" x 4¼"	205226
	17"	6" x 18" x 4¼"	205227
	18"	6" x 19" x 4¼"	205228
Maple	16"	12" x 17" x 4¼"	205340
	17"	12" x 18" x 4¼"	205341
	18"	12" x 19" x 4¼"	205342
Walnut	16"	12" x 17" x 4¼"	205240
	17"	12" x 18" x 4¼"	205241
	18"	12" x 19" x 4¼"	205242



DRYING RACKS & VEGGIE SCOOP

FOR STAINLESS STEEL SINKS

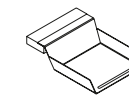
- Ideal to dry dishes or cool down hot dishes
- Innovative and functional design to match with other standard Home Refinements accessories
- 100% premium maple or walnut handles for high quality and durability
- Can be used on top of sink to create extra workspace or on countertop
- 304 series stainless steel (18/10)
- Elegant no. 4 brushed finish that matches the appliances



HANDLES	BOWL (FRONT-TO-BACK)	DIMENSIONS	RACK
Maple	16"	12" x 17" x 1"	215306
	17"	12" x 18" x 1"	215307
	18"	12" x 19" x 1"	215308
Walnut	16"	12" x 17" x 1"	215206
	17"	12" x 18" x 1"	215207
	18"	12" x 19" x 1"	215208

VEGGIE SCOOP

- Ideal to serve and gather food on cutting boards
- Innovative and functional design to match with other standard Home Refinements accessories
- 100% premium maple or walnut handle for high quality and durability
- 304 series stainless steel (18/10)
- Elegant no. 4 brushed finish that matches the appliances

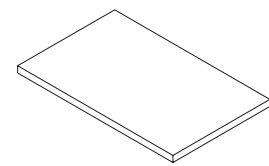


HANDLE	BOWL (FRONT-TO-BACK)	DIMENSIONS	SCOOP
Maple	–	6" x 8" x 2¼"	205338
Walnut	–	6" x 8" x 2¼"	205238

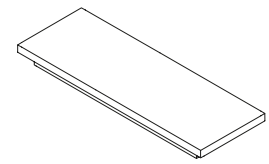
CUTTING BOARDS & PRESENTATION BOARDS

FOR STAINLESS STEEL SINKS

- Can be used on top of sink to create extra workspace or on countertop
- Innovative and functional design to match with other standard Home Refinements accessories
- 100% premium maple or walnut for high quality and durability
- Penetrating oil finish
- Safe for all food preparation

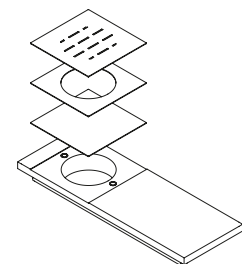


WOOD	BOWL (FRONT-TO-BACK)	DIMENSIONS	BOARD
Maple	16"	12" x 17" x 1½"	210064
	17"	12" x 18" x 1½"	210066
	18"	12" x 19" x 1½"	210068
Walnut	16"	12" x 17" x 1½"	210063
	17"	12" x 18" x 1½"	210065
	18"	12" x 19" x 1½"	210067



WOOD	BOWL (FRONT-TO-BACK)	DIMENSIONS	BOARD
Maple	18"	6" x 19" x 1½"	210080
Walnut	18"	6" x 19" x 1½"	210077

PRESENTATION BOARD

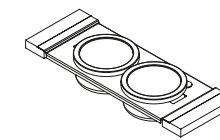


WOOD	BOWL (FRONT-TO-BACK)	DIMENSIONS	BOARD
Maple	16"	6" x 17" x 1½"	210072
	17"	6" x 18" x 1½"	210073
	18"	6" x 19" x 1½"	210074
Walnut	16"	6" x 17" x 1½"	210069
	17"	6" x 18" x 1½"	210070
	18"	6" x 19" x 1½"	210071

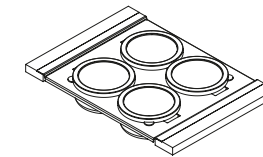
SERVING BOARDS WITH BOWLS

FOR STAINLESS STEEL SINKS

- Can be used on top of sink to create extra workspace
- Ideal to prepare or to serve food
- Innovative and functional design to match with other standard Home Refinements accessories
- Small stainless steel bowls with silicone lids allow for easy storage of their content
- Dishwasher safe BPA-free lids
- 100% premium hard rock maple or walnut handles for high quality and durability
- Rubber-tipped footings for better stability and protection
- 304 series stainless steel (18/10)
- Elegant no. 4 brushed finish that matches the appliances



HANDLES	BOWL (FRONT-TO-BACK)	DIMENSIONS	BOARD
Maple	16"	6" x 17" x 3"	225301
	17"	6" x 18" x 3"	225302
	18"	6" x 19" x 3"	225303
Walnut	16"	6" x 17" x 3"	225201
	17"	6" x 18" x 3"	225202
	18"	6" x 19" x 3"	225203

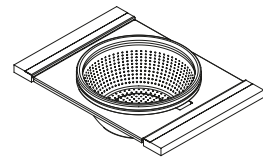


Maple	16"	12" x 17" x 3"	225304
	17"	12" x 18" x 3"	225305
	18"	12" x 19" x 3"	225306
Walnut	16"	12" x 17" x 3"	225204
	17"	12" x 18" x 3"	225205
	18"	12" x 19" x 3"	225206

SERVING BOARD WITH MIXING BOWL AND COLANDER

FOR STAINLESS STEEL SINKS

- Can be used on top of sink to create extra workspace
- Ideal to prepare or to serve food
- Large bowl and colander can be used at the sink or directly on work surfaces
- Innovative and functional design to match with other standard Home Refinements accessories
- 100% premium hard rock maple or walnut handles for high quality and durability
- Rubber-tipped footings for better stability and protection
- 304 series stainless steel (18/10)
- Elegant no. 4 brushed finish that matches the appliances

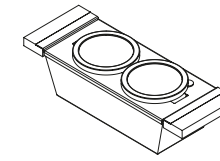


HANDLES	BOWL (FRONT-TO-BACK)	DIMENSIONS	BOARD
Maple	16"	12" x 17" x 4"	225307
	17"	12" x 18" x 4"	225308
	18"	12" x 19" x 4"	225309
Walnut	16"	12" x 17" x 4"	225207
	17"	12" x 18" x 4"	225208
	18"	12" x 19" x 4"	225209

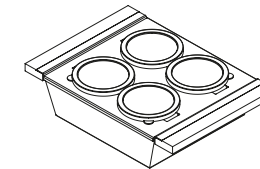
SERVING BINS WITH BOWLS

FOR STAINLESS STEEL SINKS

- Can be used on top of sink to create extra workspace or on countertop
- Ideal to prepare or to serve food
- Innovative and functional design to match with other standard Home Refinements accessories
- Small stainless steel bowls with silicone lids allow for easy storage of their content
- Dishwasher safe BPA-free lids
- 100% premium hard rock maple or walnut handles for high quality and durability
- Rubber-tipped footings for better stability and protection
- 304 series stainless steel (18/10)
- Elegant no. 4 brushed finish that matches the appliances



HANDLES	BOWL (FRONT-TO-BACK)	DIMENSIONS	BIN
Maple	16"	6" x 17" x 4"	225310
	17"	6" x 18" x 4"	225311
	18"	6" x 19" x 4"	225312
Walnut	16"	6" x 17" x 4"	225210
	17"	6" x 18" x 4"	225211
	18"	6" x 19" x 4"	225212



Maple	16"	12" x 17" x 4"	225313
	17"	12" x 18" x 4"	225314
	18"	12" x 19" x 4"	225315
Walnut	16"	12" x 17" x 4"	225213
	17"	12" x 18" x 4"	225214
	18"	12" x 19" x 4"	225215

CARE PRODUCTS

FOR WOOD

- Apply regularly on wooden kitchen accessories to restore moisture
- Contains beeswax, carnauba and bran rice oil
- Mineral oil free
- Food-safe

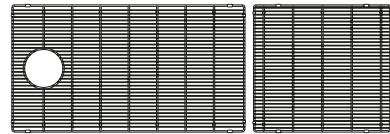
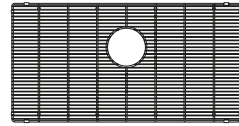


DESCRIPTION	VOLUME / UNIT	QTY	PRODUCT
Maintenance wax for wood	70 ml (2,5 fl. oz)	1	215019

GRIDS

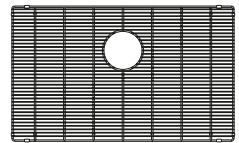
SMARTSTATION

- Ideal for rinsing or draining food, or simply protecting the sink surface from scratching
- Rubber protectors on all corners to protect from scratching bowl sides
- Rubber-tipped footings for better stability and protection
- 304 series stainless steel (18/10)



COLLECTION	DRAIN POSITION	BOWL	GRID
SmartStation	Center	12" x 17"	200930
		18" x 17"	200931
		24" x 17"	200913
		27" x 17"	200914
		30" x 17"	200915
	Center left or right	36" x 17"	200932
		48" x 17"	200927
		60" x 17"	200929*
			200927
			200928*
SmartStation with extended flange	Center	30" x 16"	200909
	Center left or right	36" x 16"	200911
		48" x 16"	200949
			200950

SOCIALCORNER

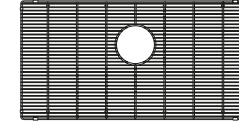


COLLECTION	DRAIN POSITION	BOWL	GRID
SocialCorner	Center	23" x 18"	200933
		29" x 18"	200934
		35" x 18"	200935

*These grids come in two sections in order to fit the extra long bowl.

URBANEDGE, J7, CLASSIC

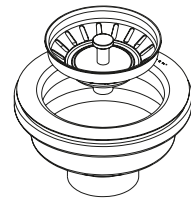
- Ideal for rinsing or draining food, or simply protecting the sink surface from scratching
- Rubber protectors on all corners to protect from scratching bowl sides
- Rubber-tipped footings for better stability and protection
- 304 series stainless steel (18/10)



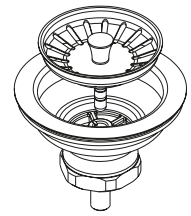
COLLECTION	DRAIN POSITION	BOWL	GRID
UrbanEdge, J7, Classic	Center	9" x 16"	200902
		12" x 12"	200924
		12" x 15"	200925
		12" x 16"	200903
		15" x 15"	200926
		15" x 16"	200904
		15" x 18"	200916
		18" x 16"	200905
		18" x 18"	200917
		21" x 16"	200906
		21" x 17"	200912
		21" x 18"	200918
		24" x 16"	200907
		24" x 17"	200913
		24" x 18"	200919
		27" x 16"	200908
		27" x 17"	200914
		27" x 18"	200920
		30" x 16"	200909
		30" x 17"	200915
		30" x 18"	200921
		33" x 16"	200910
		33" x 18"	200922
36" x 16"	200911		
36" x 18"	200923		

DRAINS

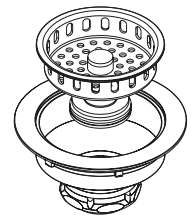
FOR STAINLESS STEEL SINKS



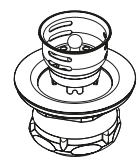
DIAMETER	FINISH	DRAIN
3 1/2"	Stainless steel	100056
<ul style="list-style-type: none"> - Stainless steel and plastic construction - Removable stainless steel basket strainer - 1 1/2" diameter and 4" long tailpiece included 		<ul style="list-style-type: none"> - Fits standard 3 1/2" diameter drain opening - Fits stainless steel sinks



DIAMETER	FINISH	DRAIN
3 1/2"	Brushed nickel Polished chrome	100080 100081
<ul style="list-style-type: none"> - Solid brass construction - Removable stainless steel basket strainer - Available in two finishes 		<ul style="list-style-type: none"> - Fits standard 3 1/2" diameter drain opening - Fits stainless steel sinks and fireclay sinks up to 2" thick

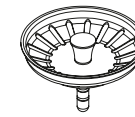


DIAMETER	FINISH	DRAIN
3 1/2"	Brushed nickel Polished chrome	100082 100083
<ul style="list-style-type: none"> - Solid brass construction - Removable deep basket strainer 		<ul style="list-style-type: none"> - Fits standard 3 1/2" diameter drain opening - Fits stainless steel sinks

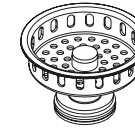


DIAMETER	FINISH	DRAIN
2"	Brushed nickel Polished chrome	100085 100086
<ul style="list-style-type: none"> - Solid brass construction - Removable deep basket strainer 		<ul style="list-style-type: none"> - Fits standard 2" diameter drain opening - Fits stainless steel sinks

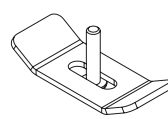
REPLACEMENT PARTS



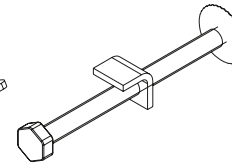
DESCRIPTION	FINISH	DRAIN
Basket strainer	Brushed nickel Polished chrome	100132 100133
- Replacement basket strainer for drain # 100080 and # 100081		



DESCRIPTION	FINISH	DRAIN
Basket strainer	Brushed nickel Polished chrome	100134 100135
- Replacement basket strainer for drain # 100082 and # 100083		



010700



011126

DESCRIPTION	INSTALLATION TYPE	QTY	PART
Mounting hardware	Undermount	5	010700
Mounting hardware	Topmount	5	011126

- Mounting hardware pour installation
- For undermount/topmount installation



011240



011241

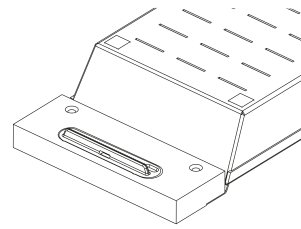
DESCRIPTION	INSTALLATION TYPE	QTY	PART
Rubber-tipped footings		8	011240

- Protect from scratching the bottom of the sink
- Improve the stability of the grid

DESCRIPTION	INSTALLATION TYPE	QTY	PART
Rubber corner protectors		8	011241

- Protect from scratching bowl sides

REPLACEMENT PARTS



DESCRIPTION	WOOD	DIMENSION	PART
Set of 2 handles	Walnut	12"	299033
	Walnut	6"	299034
	Maple	12"	299035
	Maple	6"	299036

- Set of 2 12" or 6" handles for 17" accessories
- Includes 2 stoppers and 4 screws

Set of 2 handles	Walnut	12"	299037
	Walnut	6"	299038
	Maple	12"	299039
	Maple	6"	299040

- Set of 2 12" or 6" handles for 16" and 18" accessories
- Includes 2 stoppers and 4 screws

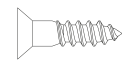
DESCRIPTION	QTY	PART
-------------	-----	------

Set of 4 screws	1	299045
-----------------	---	--------

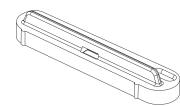
- Set of 4 screws to install stoppers for accessories with wooden handles

Set of 2 stoppers and 4 screws	1	299046
--------------------------------	---	--------

- Set of 2 stoppers and 4 screws for accessories with wooden handles



299045



011240

AGELESS, PEERLESS, *FIRECLAY*

Perfectly smooth and strong. Our firing process produces top-quality sinks that are simply beautiful to behold. And because it's always nice to be able to change your mind, we offer two designs on the same product: a flat apron for a contemporary look or a Shaker style apron for a more classical touch. With their integrated accessory ledge, the Fira sinks are true workstations whose undeniable functionality is only equalled by the refinement of the accessory line that complements them.



FIRA

- Designed in Canada, handcrafted in Italy
- Slightly rounded corners [10mm]
- Reversible apron front design: flat or Shaker style
- Deep 10" bowl and 3/4" thick walls for optimized work space
- Product dimensional variability $\pm 3/16$ " due to manufacturing process
- Made of fireclay and glazed on all sides, white gloss finish
- Off set center or center 3 1/2" drain placement
- Sloped bottom for maximized drainage
- Waste disposal unit compatible, recommended to confirm waste disposal or drain maximal thickness specifications.
- No template provided, recommended to have the sink on hand for final sizing of cabinet and countertop
- Certifications : ASME A112.19.2/CSA B45.1

STUNNING FROM ALL *ANGLES*

You can view this sink with our online 3D configurator in just a few clicks.

Visit the following link : homerefinements.ca/en_ca/indoor-living/a-la-carte/3d-configurator

THE
3D
CONFIGURATOR



Kitchen sink



Bar sink

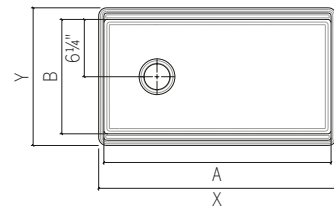
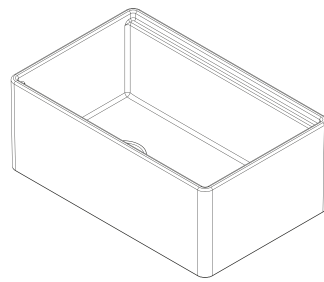


AVAILABLE ACCESSORIES

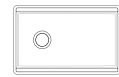
Refer to page 126 for accessory compatibility.

FIRA

KITCHEN SINK WITH LEDGE



CABINET 33"



OVERALL
(X × Y × Z)*
29 3/4" × 19" × 11 1/2"

Sink 093019
BOWL (A × B × C)*
28 1/4" × 15 3/4" × 10"

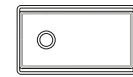
INCLUDED



Cutting board
210060

Grid 200946

CABINET 36"



OVERALL
(X × Y × Z)*
32 3/4" × 19" × 11 1/2"

Sink 093319
BOWL (A × B × C)*
31 1/4" × 15 3/4" × 10"

INCLUDED



Cutting board
210060

Grid 200939

CABINET 39"



OVERALL
(X × Y × Z)*
35 3/4" × 19" × 11 1/2"

Sink 093619
BOWL (A × B × C)*
34 1/4" × 15 3/4" × 10"

INCLUDED



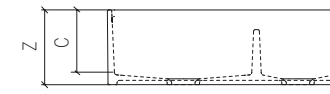
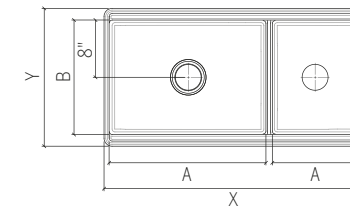
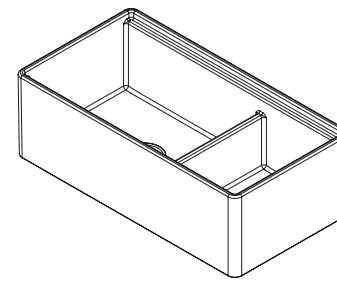
Cutting board
210060

Grid 200941

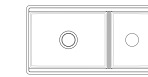
*Dimensions can vary ± 3/16"

Undermount installation with apron

KITCHEN SINK WITH LEDGE



CABINET 39"



OVERALL
(X × Y × Z)*
35 3/4" × 19" × 11 1/2"

Sink 103619
BOWL (A × B × C)*
G 21" × 15 3/4" × 10"
D 11 1/4" × 15 3/4" × 10"

INCLUDED



Cutting board
210060

Grid 200942 (G)

Grid 200943 (D)

*Dimensions can vary ± 3/16"

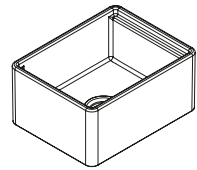
15 3/4" FRONT TO BACK SINK

15 3/4" FRONT TO BACK SINK

FIRA

Undermount installation with apron

BAR SINK WITH LEDGE



CABINET 21"



OVERALL
(X × Y × Z)*
14¾" × 19" × 8¾"

Sink 091519
BOWL (A × B × C)*
13¾" × 15¾" × 7"

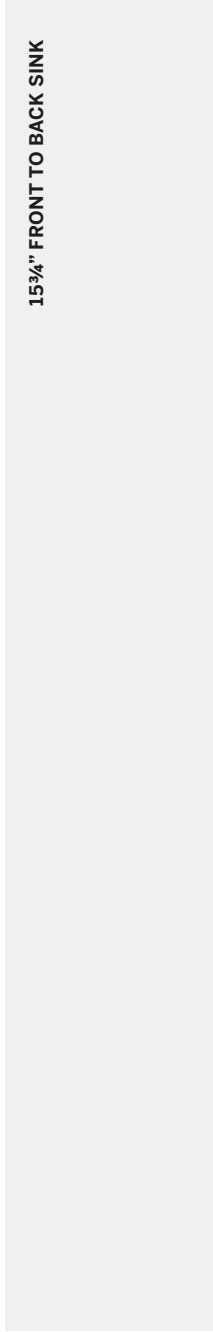
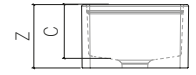
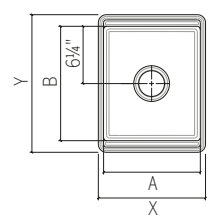
INCLUDED



Cutting board
210061

Grid 200936

*Dimensions can vary ± 3/16"



ENHANCE YOUR SINK

From drains, grids, colanders, and cutting boards, there are many ways to upgrade your Home Refinements sink. These accessories, as beautiful as they are functional, work like a charm.

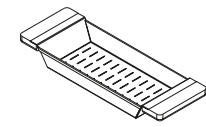


COLANDERS

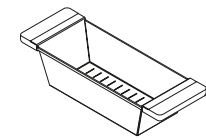
FOR FIRECLAY SINKS

- Designed to match with other walnut accessories for Fira sinks with accessory ledge
- Ideal to prepare and serve food

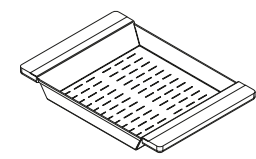
- Made of 304 series stainless steel (18/10) with solid walnut handles
- Rubber feet for better stability and protection



COLLECTION	BOWL (FRONT-TO-BACK)	DIMENSIONS	COLANDER
Fira	15 3/4"	6" x 17 3/8" x 2 1/4"	205036



Fira	15 3/4"	6" x 17 3/8" x 4 1/4"	205038
------	---------	-----------------------	--------



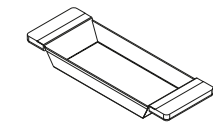
Fira	15 3/4"	12" x 17 3/8" x 2 1/4"	205040
------	---------	------------------------	--------

TRAYS & BINS

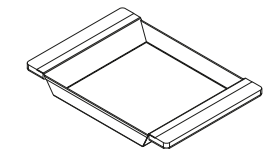
FOR FIRECLAY SINKS

- Designed to match with other walnut accessories for Fira sinks with accessory ledges
- Ideal to prepare and serve food

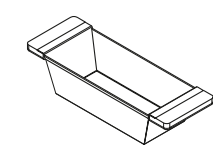
- Made of 304 series stainless steel (18/10) with solid walnut handles
- Rubber feet for better stability and protection



COLLECTION	BOWL (FRONT-TO-BACK)	DIMENSIONS	TRAY
Fira	15 3/4"	6" x 17 3/8" x 2 1/4"	205037



Fira	15 3/4"	12" x 17 3/8" x 2 1/4"	205041
------	---------	------------------------	--------

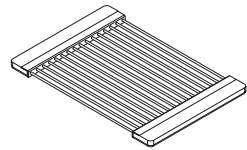


COLLECTION	BOWL (FRONT-TO-BACK)	DIMENSIONS	BIN
Fira	15 3/4"	6" x 17 3/8" x 4 1/4"	205039

DRYING RACKS

FOR FIRECLAY SINKS

- Designed to match with other walnut accessories for Fira sinks with accessory ledges
- Ideal to dry dishes or cool down hot dishes
- Made of 304 series stainless steel (18/10) with solid walnut handles

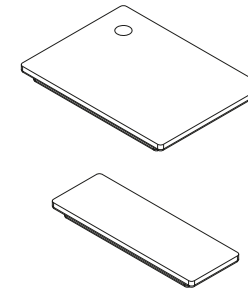


COLLECTION	BOWL (FRONT-TO-BACK)	DIMENSIONS	RACK
Fira	15 3/4"	12" x 17 3/8" x 3/4"	215009

CUTTING BOARDS & PRESENTATION BOARDS

FOR FIRECLAY SINKS

- Designed to match with other walnut accessories for Fira sinks with accessory ledges
- Made of 1 1/2" thick solid walnut, edge grain construction
- Treated with penetrating beeswax to seal the wood moisture
- Safe for all food preparation

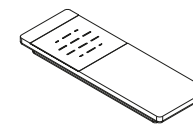


COLLECTION	BOWL (FRONT-TO-BACK)	DIMENSIONS	BOARD
Fira	15 3/4"	12 3/4" x 17 3/8" x 1 1/2"	210060*
	15 3/4"	6" x 17 3/8" x 1 1/2"	210061**

*Cutting board 210060 is included with all kitchen sinks.
 **Cutting board 210061 is included with bar sink.

PRESENTATION BOARD

- Designed to match with other walnut accessories for Fira sinks with accessory ledge
- Ideal as a presentation board or water station tray
- Made of 1 1/2" thick solid walnut, edge grain construction
- Includes 3 interchangeable magnetic stainless steel plates, for different applications
- Treated with penetrating beeswax to seal the wood moisture
- Safe for all food preparation

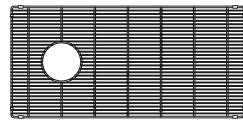


COLLECTION	BOWL (FRONT-TO-BACK)	DIMENSIONS	BOARD
Fira	15 3/4"	6" x 17 3/8" x 1 1/2"	210062

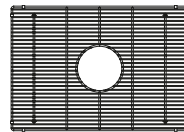
GRIDS

FOR FIRECLAY SINKS

- Ideal for rinsing or draining food, or simply protecting the sink surface from scratching
- Rubber protectors on all corners to protect from scratching bowl sides
- Rubber feet for better stability and protection
- 304 series stainless steel (18/10)



COLLECTION	DRAIN	BOWL	GRID
Fira	Center left or right	26 ⁷ / ₈ " x 14 ³ / ₈ "	200946
		29 ⁷ / ₈ " x 14 ³ / ₈ "	200939
		32 ⁷ / ₈ " x 14 ³ / ₈ "	200941

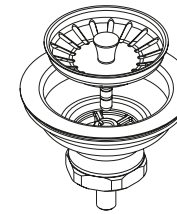


COLLECTION	DRAIN	BOWL	GRID
Fira	Centre	11 ⁷ / ₈ " x 14 ³ / ₈ "	200936
		20 ¹ / ₈ " x 14 ³ / ₈ "	200942
		10 ³ / ₈ " x 14 ³ / ₈ "	200943

DRAINS

FOR FIRECLAY SINKS

- Solid brass construction
- Removable stainless steel basket strainer
- Fits standard 3¹/₂" diameter drain opening

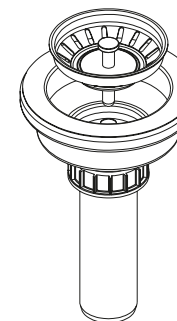


DIAMETER	FINISH	DRAIN
3 ¹ / ₂ "	Brushed nickel	100080
	Polished chrome	100081

- Fits Home Refinements fireclay sinks up to 2" thick
- Available in two finishes

- Stainless steel and polypropylene construction
- Removable stainless steel basket strainer
- 1¹/₂" diameter and 4" long tailpiece included

- Fits standard 3¹/₂" diameter drain opening
- Fits Home Refinements fireclay sinks up to 1¹/₂" thick



DIAMETER	FINISH	DRAIN
3 ¹ / ₂ "	Stainless steel	100130

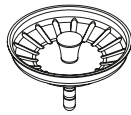
CARE PRODUCTS & REPLACEMENT PARTS

FOR FIRECLAY SINKS



DESCRIPTION	VOLUME / UNIT	QTY	PRODUCT
Maintenance wax for wood	70 ml (2,5 fl. oz)	1	215019

- Apply regularly on wooden kitchen accessories to restore moisture
- Contains beeswax, carnauba wax and bran rice oil
- Mineral oil free
- Food-safe



DESCRIPTION	FINISH	DRAIN
Basket strainer	Brushed nickel	100132
	Polished chrome	100133

- Replacement basket strainer for drain # 100080 and # 100081
- Available in two finishes



011240



011241

DESCRIPTION	QTY	PART
Rubber-tipped footings	8	011240
Rubber corner protectors	8	011241

- Protect from scratching the bottom of the sink
- Improve the stability of the grid
- Protect the inside of the sink

JUST ADD *WATER*

Whether you're looking for a professional or pull-out faucet, we have just what you need. Simple, precise design that delivers optimal performance worthy of the most seasoned chefs.



PROFESSIONAL COLLECTION

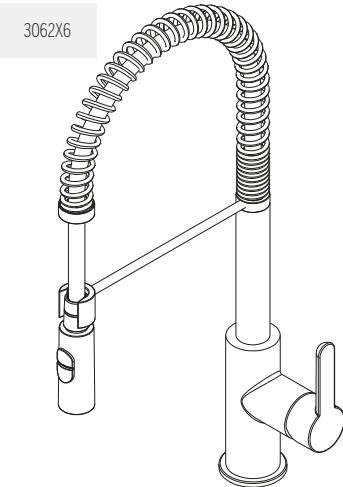
KITCHEN SINK FAUCETS

- Made in Italy
- Solid brass construction
- Single hole installation
- 360° swivel flexible spout
- Dual jet spray head
- Locking spray jet mode
- Descaling system, for easy cleaning
- 8 5/8" projection

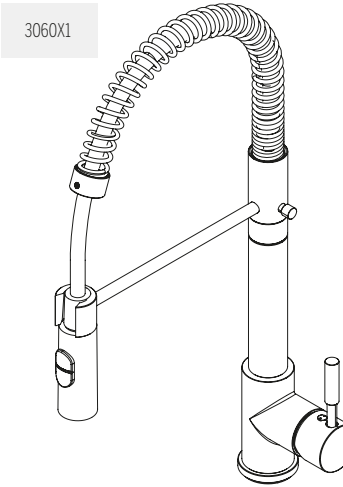
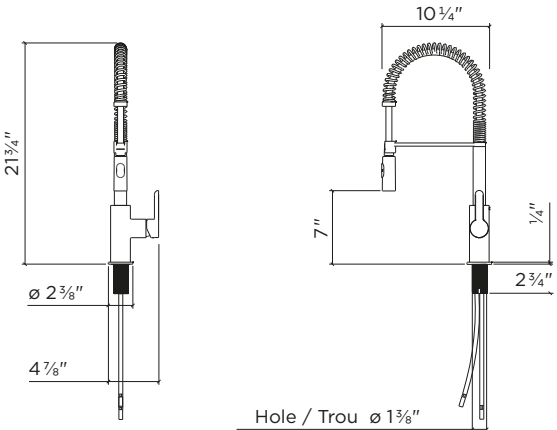
- Forward (90°) and lateral (30°) lever handle rotation, no interference with backsplash
- Braided stainless steel water supply hoses 16" long, with 3/8" fittings
- 2.2 gpm (8.3 L/min.) flow rate aerator
- Ceramic cartridge
- ASME A112.18.1 / CSA B125.1
- NSF / ANSI 61 compliant, low lead content
- ADA compliant

- Made in Italy
- Solid brass construction
- Single hole installation
- 360° swivel flexible spout
- Dual jet spray head
- Locking spray jet mode
- Descaling system, for easy cleaning
- 8 5/8" projection

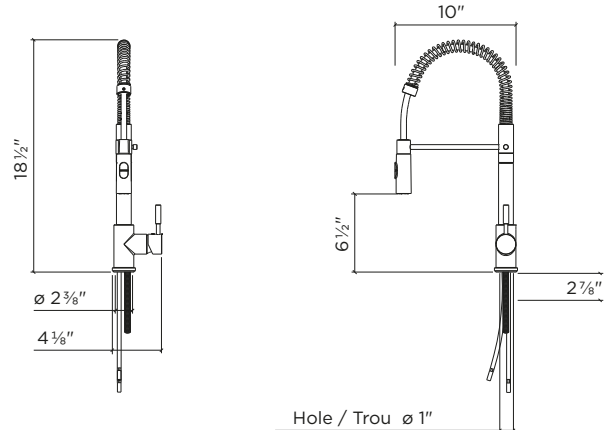
- Forward (90°) and lateral (30°) lever handle rotation, no interference with backsplash
- Braided stainless steel water supply hoses 16" long, with 3/8" fittings
- 2.2 gpm (8.3 L/min.) flow rate aerator
- Ceramic cartridge



NAME	FINISH	FAUCET
Peak	Polished chrome Brushed nickel	306206 306216



NAME	FINISH	FAUCET
Wave	Polished chrome Brushed nickel	306001 306011



PULL-OUT COLLECTION

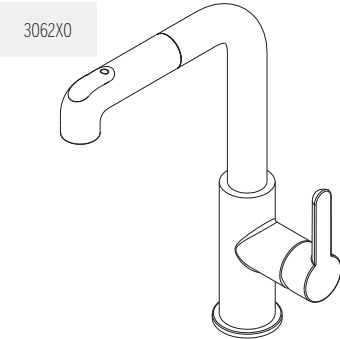
KITCHEN SINK FAUCETS

- Made in Italy
- Solid brass construction
- Single hole installation
- 110° swivel spout
- Pull-out Dual jet spray head
- Locking spray jet mode
- Descaling system, for easy cleaning
- 8" projection

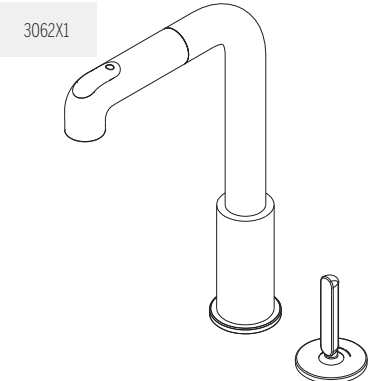
- Forward (90°) and lateral (30°) lever handle rotation, no interference with backsplash
- Braided stainless steel water supply hoses 18" long, with 3/8" fittings
- 2.2 gpm (8.3 L/min.) flow rate aerator
- Ceramic cartridge

- Made in Italy
- Solid brass construction
- Double hole installation
- 110° swivel spout
- Pull-out Dual jet spray head
- Locking spray jet mode
- Descaling system, for easy cleaning

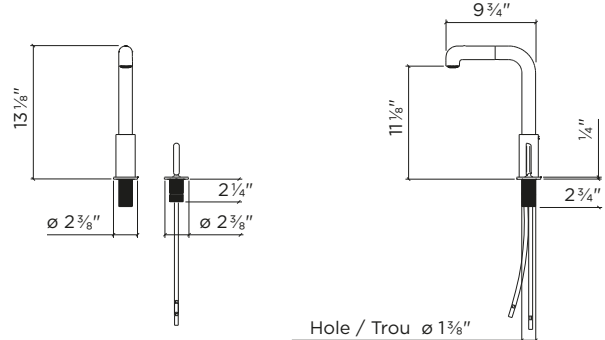
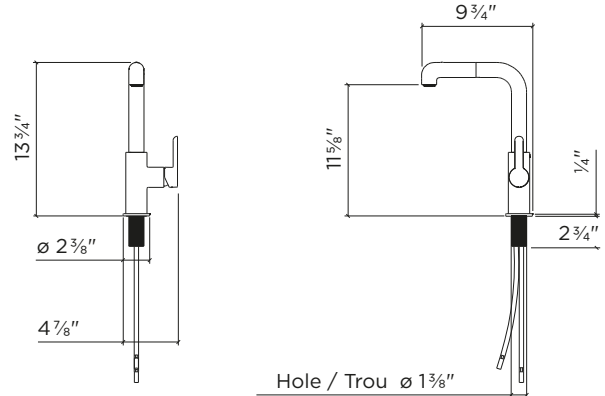
- 8" projection
- Backward (30°) and bilateral (45°) lever handle rotation
- Braided stainless steel water supply hoses 18" long, with 3/8" fittings
- 2.2 gpm (8.3 L/min.) flow rate aerator
- Ceramic cartridge



NAME	FINISH	FAUCET
Latitude	Polished chrome Brushed nickel	306200 306210



NAME	FINISH	FAUCET
Latitude with remote single lever	Polished chrome Brushed nickel	306201 306211



PULL-OUT COLLECTION

KITCHEN SINK FAUCETS

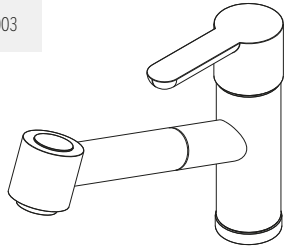
- Made in Germany
- Solid brass construction
- Single hole installation
- 130° swivel spout
- Pull-out Dual jet spray head
- Locking spray jet mode
- Descaling system, for easy cleaning

- 8 7/8" Projection
- Top (30°) and lateral (60°) lever handle rotation, does not interfere with the backsplash
- Braided stainless steel water supply hoses 16" long
- 2.2 gpm (8.3 L/min.) flow rate aerator
- Ceramic cartridge

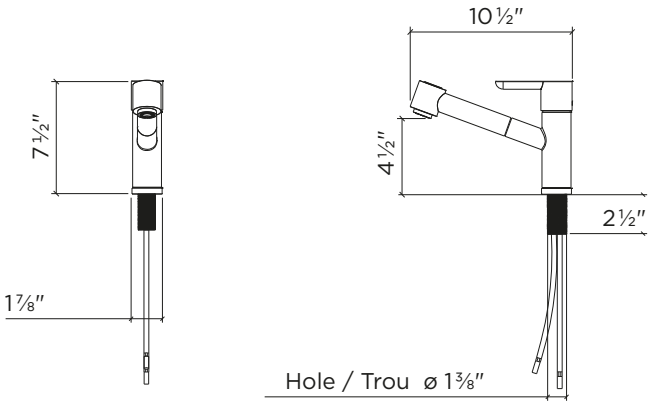
- Made in Germany
- Solid brass construction
- Single hole installation
- 360° swivel flexible spout
- Dual jet spray head
- Locking spray jet mode
- Descaling system, for easy cleaning

- 9 1/4" projection
- Top (30°) and lateral (60°) lever handle rotation, does not interfere with the backsplash
- Braided stainless steel water supply hoses 16" long
- 2.2 gpm (8.3 L/min.) flow rate aerator
- Ceramic cartridge

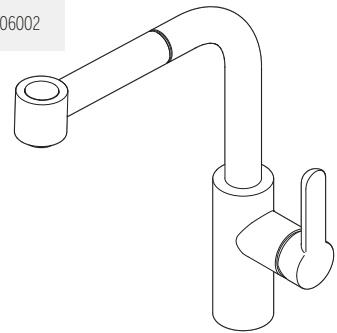
306003



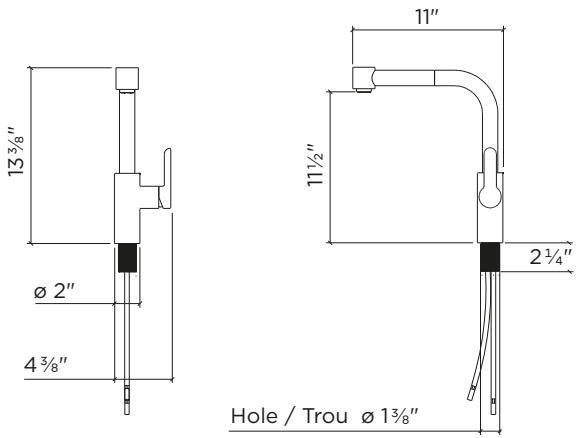
NAME	FINISH	FAUCET
Source	Polished chrome	306003



306002



NOM	FINI	FAUCET
Pure	Polished chrome	306002



PULL-OUT COLLECTION

KITCHEN SINK FAUCETS

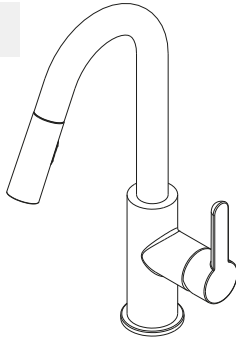
- Made in Italy
- Solid brass construction
- Single hole installation
- 110° swivel spout
- Dual jet spray head
- Locking spray jet mode
- Descaling system, for easy cleaning
- 7" projection

- Forward (90°) and lateral (30°) lever handle rotation, no interference with backsplash
- Braided stainless steel water supply hoses 18" long, with 3/8" fittings
- 2,2 gpm (8,3 L/min.) flow rate aerator
- Ceramic cartridge

- Made in Italy
- Solid brass construction
- Double hole installation
- 110° swivel spout
- Dual jet spray head
- Locking spray jet mode
- Descaling system, for easy cleaning

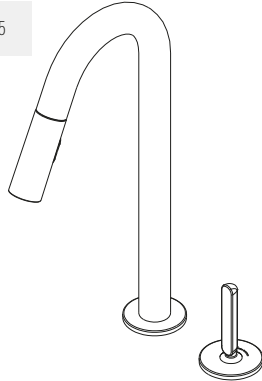
- 7" projection
- Backward (30°) and bilateral (45°) lever handle rotation
- Braided stainless steel water supply hoses 18" long, with 3/8" fittings
- 2,2 gpm (8,3 L/min.) flow rate aerator
- Ceramic cartridge

306214

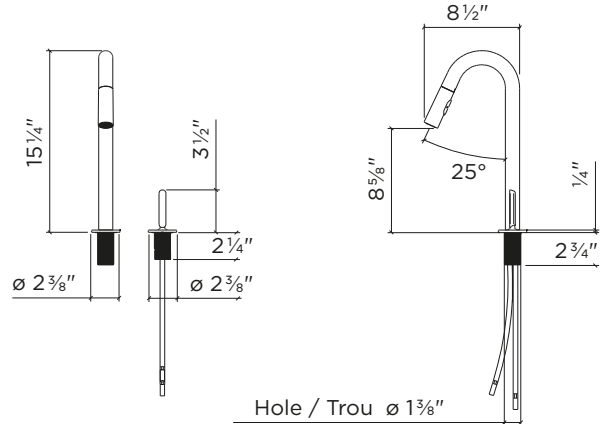
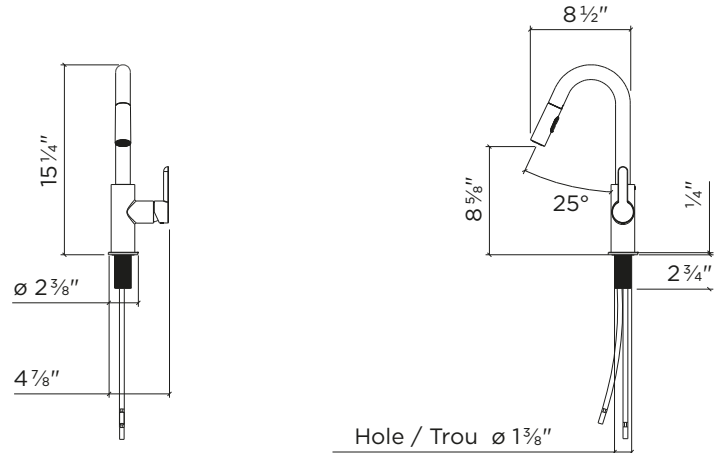


NAME	FINISH	FAUCET
Apex	Brushed nickel	306214

3062X5



NAME	FINISH	FAUCET
Apex with remote single lever	Polished chrome	306205
	Brushed nickel	306215



PULL-DOWN COLLECTION

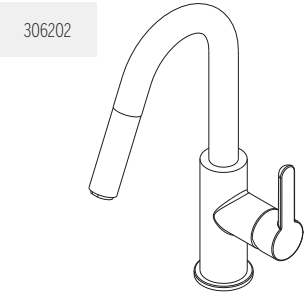
BAR SINK FAUCETS

- Made in Italy
- Solid brass construction
- Single hole installation
- 110° swivel spout
- Pull-down spray head
- Descaling system, for easy cleaning
- 7" projection

- Forward (90°) and lateral (30°) lever handle rotation, no interference with backsplash
- Braided stainless steel water supply hoses 18" long, with 3/8" fittings
- 2.2 gpm (8.3 L/min.) flow rate aerator
- Ceramic cartridge

- Made in Italy
- Solid brass construction
- Double hole installation
- 110° swivel spout
- Pull-down spray head
- Descaling system, for easy cleaning
- 7" projection

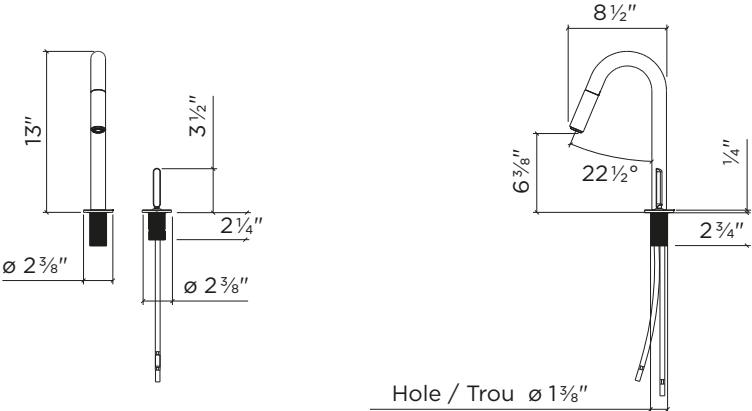
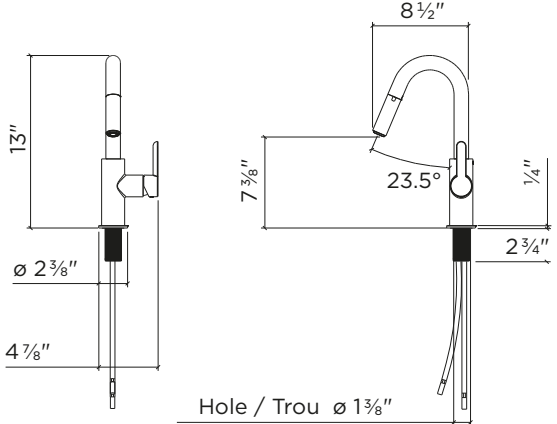
- Backward (30°) and bilateral (45°) lever handle rotation
- Braided stainless steel water supply hoses 18" long, with 3/8" fittings
- 2.2 gpm (8.3 L/min.) flow rate aerator
- Ceramic cartridge



NAME	FINISH	FAUCET
Apex prep	Polished chrome	306202



NAME	FINISH	FAUCET
Apex prep with remote single lever	Polished chrome Brushed nickel	306203 306213



WARRANTY

General information

Julien may at its sole option, repair, replace or make appropriate adjustments to the Product or components proven to be defective in order to restore to good working condition.

In no event, even if Product or components are found to be defective, shall Julien' liability exceed the price paid for the Product. Julien reserves the right to inspect the installation prior to the replacement or repair of the Product or its component parts. Julien may at its discretion require pictures prior to analyzing a claim. This limited warranty is null and void if the Product or components have been repaired, altered or modified other than by Julien or under its supervision.

This limited warranty replaces any and all other warranty, expressed or implied, including implied warranties of merchantability or fitness for a particular purpose. Laws governing product warranties may vary from one state or province to another. This warranty is not intended to contravene to the public order and shall not be so interpreted. This limited warranty extends only to the original owner/end user in residential applications and is not transferable to any subsequent purchaser. In the event of a warranty claim, original proof of purchase (sales receipt) will be required. Shipping and handling costs (for returning the product or components for repairs or to replace product or components) are not covered under this limited warranty. Also excluded from this limited warranty is any labor, workmanship or other costs incurred in connection with the Product or components removal, repairs, replacement, adjustment or installation and any incidental or consequential damages.

ATTENTION > Warranty will be null and void for any damage resulting from installation not respecting the instructions and Julien will not be held responsible for any costs incurred. In the event of a limited warranty claim, original proof of purchase will be required – save original sales receipt.

Stainless steel sinks

Julien offers a limited LIFETIME warranty on the fixed components of its stainless steel sinks, ensuring them against defects of material and workmanship. This warranty is limited to defects or damages resulting from a normal residential use. Julien will not be held responsible for defects or damages caused by improper installation.

This warranty does not cover the following points:

- Surface corrosion (chemical or natural)
- Scuffs or scratches
- Misuse, abnormal, negligent or abusive use
- Dents, deformations caused by the impact of any object
- Common signs of wear and tear
- Improper installation, care and/or maintenance
- Commercial use
- Environmental factors causing damages
- Shipping or freight damages

Fireclay sinks

Julien offers a limited 1-YEAR warranty following the purchase date against manufacturing defects and a limited 10-YEARS warranty following the purchase date against fading/staining on its fireclay sinks. This warranty is limited to defects or damages resulting from a normal residential use. Julien will not be held responsible for defects or damages caused by improper installation.

ATTENTION > Due to manufacturing process, a fireclay sink is subject to dimensional variations of $\pm 3/16"$. No cut out template is provided, we recommend cutting the countertop only after measuring the sink. A custom cabinet with reinforced support is required for installing a fireclay sink.

This warranty is limited to defects and damages caused by normal residential use and does not cover the following :

- Misuse, abnormal, negligent or abusive use
- Scratches, chips or dents (reported following installation) – Please inspect sink carefully prior to installation
- Use of abrasives and/or chemicals (such as undiluted bleach)
- Common signs of wear and tear
- Improper installation, care and/or maintenance
- Commercial use
- Environmental factors causing damages
- Shipping or freight damage

Accessories for sinks and faucets

Julien offers a limited 1-YEAR warranty following the purchase date for all mobile parts, options and accessories against defects of material and workmanship. This warranty is limited to defects or damages resulting from a normal residential use. Julien will not be held responsible for defects or damages caused by improper installation.

This warranty does not cover the following points:

- Surface corrosion (chemical or natural)
- Scuffs or scratches
- Misuse, abnormal, negligent or abusive use
- Dents, deformations caused by the impact of any object
- Common signs of wear and tear
- Improper installation, care and/or maintenance
- Commercial use
- Environmental factors causing damages
- Shipping or freight damage

Faucets

Julien offers a limited 1-YEAR warranty on its faucets following the purchase date against manufacturing defects. A limited LIFETIME warranty is offered on the ceramic cartridge as well as for flexible hoses. This warranty is limited to defects or damages resulting from a normal residential use. Julien will not be held responsible for defects or damages caused by improper installation.

This warranty does not cover the following points:

- Misuse, abnormal, negligent or abusive use
- Dents, deformations caused by the impact of any object
- Use of chemicals that alter the aspect of the faucet
- Common signs of wear and tear (reported after installation) – Please inspect the faucet carefully before installation
- Improper installation, care and/or maintenance
- Commercial use
- Environmental factors causing damages
- Shipping or freight damage

If you believe you have a warranty claim or for more information on the warranty of our products, please contact our customer service.

Customer service
1 866 901-5624 | customerservice@julien.ca

CUSTOM-MADE TERMS AND CONDITIONS

Custom orders terms and conditions

À la Carte sinks and Signature products are considered custom, made-to-order products. They are not returnable and as such are final sale. No further changes or cancellation will be accepted after the order goes into production.

PRODUCT	PAGE	PKG. DIMENSION	PKG. WEIGHT
003202	88	16 $\frac{1}{8}$ " × 23 $\frac{1}{4}$ " × 14 $\frac{3}{8}$ "	17 lbs
003203	88	19 $\frac{1}{8}$ " × 23 $\frac{1}{4}$ " × 14 $\frac{3}{8}$ "	18 lbs
003204	88	22 $\frac{1}{8}$ " × 23 $\frac{1}{4}$ " × 14 $\frac{3}{8}$ "	19 lbs
003205	88	25 $\frac{1}{8}$ " × 23 $\frac{1}{4}$ " × 14 $\frac{3}{8}$ "	23 lbs
003206	89	28 $\frac{1}{8}$ " × 23 $\frac{1}{4}$ " × 14 $\frac{3}{8}$ "	25 lbs
003207	89	28 $\frac{1}{8}$ " × 23 $\frac{1}{4}$ " × 14 $\frac{3}{8}$ "	27 lbs
003209	89	31 $\frac{1}{8}$ " × 23 $\frac{1}{4}$ " × 14 $\frac{3}{8}$ "	28 lbs
003210	89	34 $\frac{1}{8}$ " × 23 $\frac{1}{4}$ " × 14 $\frac{3}{8}$ "	28 lbs
003211	89	34 $\frac{1}{8}$ " × 23 $\frac{1}{4}$ " × 14 $\frac{3}{8}$ "	30 lbs
003212	94	22 $\frac{1}{2}$ " × 19" × 13"	15 lbs
003213	89	37 $\frac{1}{8}$ " × 23 $\frac{1}{4}$ " × 14 $\frac{3}{8}$ "	33 lbs
003214	89	40 $\frac{1}{8}$ " × 23 $\frac{1}{4}$ " × 14 $\frac{3}{8}$ "	36 lbs
003215	89	43 $\frac{1}{8}$ " × 23 $\frac{1}{4}$ " × 14 $\frac{3}{8}$ "	39 lbs
003216	89	28 $\frac{1}{8}$ " × 23 $\frac{1}{4}$ " × 14 $\frac{3}{8}$ "	28 lbs
003217	89	31 $\frac{1}{8}$ " × 23 $\frac{1}{4}$ " × 14 $\frac{3}{8}$ "	30 lbs
003218	89	34 $\frac{1}{8}$ " × 23 $\frac{1}{4}$ " × 14 $\frac{3}{8}$ "	32 lbs
003219	94	22 $\frac{1}{2}$ " × 19" × 13"	15 lbs
003222	88	22 $\frac{1}{8}$ " × 23 $\frac{1}{4}$ " × 14 $\frac{3}{8}$ "	23 lbs
003224	89	28 $\frac{1}{8}$ " × 23 $\frac{1}{4}$ " × 14 $\frac{3}{8}$ "	29 lbs
003225	94	22 $\frac{1}{8}$ " × 23 $\frac{1}{4}$ " × 14 $\frac{3}{8}$ "	18 lbs
003226	89	34 $\frac{1}{8}$ " × 23 $\frac{1}{4}$ " × 14 $\frac{3}{8}$ "	34 lbs
003227	94	22 $\frac{1}{8}$ " × 23 $\frac{1}{4}$ " × 14 $\frac{3}{8}$ "	18 lbs
003228	94	19 $\frac{1}{8}$ " × 23 $\frac{1}{4}$ " × 14 $\frac{3}{8}$ "	17 lbs
003229	94	19 $\frac{1}{8}$ " × 23 $\frac{1}{4}$ " × 14 $\frac{3}{8}$ "	17 lbs
003232	91	38 $\frac{1}{8}$ " × 23 $\frac{1}{4}$ " × 14 $\frac{3}{8}$ "	40 lbs
003233	92	38 $\frac{1}{8}$ " × 23 $\frac{1}{4}$ " × 14 $\frac{3}{8}$ "	42 lbs
003234	92	38 $\frac{1}{8}$ " × 23 $\frac{1}{4}$ " × 14 $\frac{3}{8}$ "	42 lbs
003235	89	37 $\frac{1}{8}$ " × 23 $\frac{1}{4}$ " × 14 $\frac{3}{8}$ "	34 lbs
003236	93	41 $\frac{1}{8}$ " × 23 $\frac{1}{4}$ " × 14 $\frac{3}{8}$ "	44 lbs
003237	93	41 $\frac{1}{8}$ " × 23 $\frac{1}{4}$ " × 14 $\frac{3}{8}$ "	44 lbs
003238	91	44 $\frac{1}{8}$ " × 23 $\frac{1}{4}$ " × 14 $\frac{3}{8}$ "	44 lbs
003239	93	41 $\frac{1}{8}$ " × 23 $\frac{1}{4}$ " × 14 $\frac{3}{8}$ "	44 lbs
003240	89	37 $\frac{1}{8}$ " × 23 $\frac{1}{4}$ " × 14 $\frac{3}{8}$ "	30 lbs
003241	93	41 $\frac{1}{8}$ " × 23 $\frac{1}{4}$ " × 14 $\frac{3}{8}$ "	44 lbs
003244	88	25 $\frac{1}{8}$ " × 23 $\frac{1}{4}$ " × 14 $\frac{3}{8}$ "	25 lbs

PRODUCT	PAGE	PKG. DIMENSION	PKG. WEIGHT
003246	90	35 $\frac{1}{8}$ " × 23 $\frac{1}{4}$ " × 14 $\frac{3}{8}$ "	35 lbs
003247	92	35 $\frac{1}{8}$ " × 23 $\frac{1}{4}$ " × 14 $\frac{3}{8}$ "	36 lbs
003248	90	38 $\frac{1}{8}$ " × 23 $\frac{1}{4}$ " × 14 $\frac{3}{8}$ "	40 lbs
003249	91	41 $\frac{1}{8}$ " × 23 $\frac{1}{4}$ " × 14 $\frac{3}{8}$ "	45 lbs
003251	91	38 $\frac{1}{8}$ " × 23 $\frac{1}{4}$ " × 14 $\frac{3}{8}$ "	38 lbs
003252	92	35 $\frac{1}{8}$ " × 23 $\frac{1}{4}$ " × 14 $\frac{3}{8}$ "	36 lbs
003253	91	41 $\frac{1}{8}$ " × 23 $\frac{1}{4}$ " × 14 $\frac{3}{8}$ "	45 lbs
003254	90	38 $\frac{1}{8}$ " × 23 $\frac{1}{4}$ " × 14 $\frac{3}{8}$ "	40 lbs
003256	90	35 $\frac{1}{8}$ " × 23 $\frac{1}{4}$ " × 14 $\frac{3}{8}$ "	35 lbs
003257	89	43 $\frac{1}{8}$ " × 23 $\frac{1}{4}$ " × 14 $\frac{3}{8}$ "	42 lbs
003258	88	25 $\frac{1}{8}$ " × 23 $\frac{1}{4}$ " × 14 $\frac{3}{8}$ "	26 lbs
003259	89	40 $\frac{1}{8}$ " × 23 $\frac{1}{4}$ " × 14 $\frac{3}{8}$ "	38 lbs
003277	90	38 $\frac{1}{8}$ " × 23 $\frac{1}{4}$ " × 14 $\frac{3}{8}$ "	38 lbs
003278	90	38 $\frac{1}{8}$ " × 23 $\frac{1}{4}$ " × 14 $\frac{3}{8}$ "	38 lbs
003280	89	31 $\frac{1}{8}$ " × 23 $\frac{1}{4}$ " × 14 $\frac{3}{8}$ "	32 lbs
003281	91	41 $\frac{1}{8}$ " × 23 $\frac{1}{4}$ " × 14 $\frac{3}{8}$ "	44 lbs
003282	91	41 $\frac{1}{8}$ " × 23 $\frac{1}{4}$ " × 14 $\frac{3}{8}$ "	44 lbs
003283	91	44 $\frac{1}{8}$ " × 23 $\frac{1}{4}$ " × 14 $\frac{3}{8}$ "	48 lbs
003284	89	40 $\frac{1}{8}$ " × 23 $\frac{1}{4}$ " × 14 $\frac{3}{8}$ "	33 lbs
003285	89	31 $\frac{1}{8}$ " × 23 $\frac{1}{4}$ " × 14 $\frac{3}{8}$ "	26 lbs
003290	89	37 $\frac{1}{8}$ " × 23 $\frac{1}{4}$ " × 14 $\frac{3}{8}$ "	36 lbs
003601	60	16 $\frac{1}{8}$ " × 23 $\frac{1}{4}$ " × 14 $\frac{3}{8}$ "	17 lbs
003602	60	19 $\frac{1}{8}$ " × 23 $\frac{1}{4}$ " × 14 $\frac{3}{8}$ "	18 lbs
003603	60	22 $\frac{1}{8}$ " × 23 $\frac{1}{4}$ " × 14 $\frac{3}{8}$ "	19 lbs
003604	60	25 $\frac{1}{8}$ " × 23 $\frac{1}{4}$ " × 14 $\frac{3}{8}$ "	23 lbs
003606	61	28 $\frac{1}{8}$ " × 23 $\frac{1}{4}$ " × 14 $\frac{3}{8}$ "	25 lbs
003607	61	28 $\frac{1}{8}$ " × 23 $\frac{1}{4}$ " × 14 $\frac{3}{8}$ "	27 lbs
003608	66	22 $\frac{1}{2}$ " × 19" × 13"	15 lbs
003609	66	22 $\frac{1}{8}$ " × 23 $\frac{1}{4}$ " × 14 $\frac{3}{8}$ "	18 lbs
003610	61	31 $\frac{1}{8}$ " × 23 $\frac{1}{4}$ " × 14 $\frac{3}{8}$ "	26 lbs
003611	61	34 $\frac{1}{8}$ " × 23 $\frac{1}{4}$ " × 14 $\frac{3}{8}$ "	28 lbs
003612	61	34 $\frac{1}{8}$ " × 23 $\frac{1}{4}$ " × 14 $\frac{3}{8}$ "	30 lbs
003613	66	22 $\frac{1}{8}$ " × 23 $\frac{1}{4}$ " × 14 $\frac{3}{8}$ "	18 lbs
003614	66	19 $\frac{1}{8}$ " × 23 $\frac{1}{4}$ " × 14 $\frac{3}{8}$ "	17 lbs
003615	61	37 $\frac{1}{8}$ " × 23 $\frac{1}{4}$ " × 14 $\frac{3}{8}$ "	30 lbs

PRODUCT	PAGE	PKG. DIMENSION	PKG. WEIGHT
003616	66	19½" × 23¼" × 14¾"	17 lbs
003617	66	22½" × 19" × 13"	14 lbs
003618	61	28½" × 23¼" × 14¾"	28 lbs
003619	66	35½" × 12½" × 10"	16 lbs
003621	61	34½" × 23¼" × 14¾"	32 lbs
003622	66	47½" × 23" × 13"	19 lbs
003626	60	22½" × 23¼" × 14¾"	23 lbs
003627	60	25½" × 23¼" × 14¾"	26 lbs
003628	61	28½" × 23¼" × 14¾"	29 lbs
003629	61	31½" × 23¼" × 14¾"	32 lbs
003631	61	34½" × 23¼" × 14¾"	34 lbs
003633	61	40½" × 23¼" × 14¾"	38 lbs
003634	61	43½" × 23¼" × 14¾"	42 lbs
003637	63	38½" × 23¼" × 14¾"	40 lbs
003638	64	38½" × 23¼" × 14¾"	42 lbs
003639	64	38½" × 23¼" × 14¾"	42 lbs
003640	65	41½" × 23¼" × 14¾"	44 lbs
003641	65	41½" × 23¼" × 14¾"	44 lbs
003642	63	41½" × 23¼" × 14¾"	50 lbs
003643	65	41½" × 23¼" × 14¾"	44 lbs
003644	65	41½" × 23¼" × 14¾"	44 lbs
003647	60	25½" × 23¼" × 14¾"	25 lbs
003648	62	35½" × 23¼" × 14¾"	35 lbs
003649	62	38½" × 23¼" × 14¾"	40 lbs
003651	64	35½" × 23¼" × 14¾"	36 lbs
003652	64	35½" × 23¼" × 14¾"	36 lbs
003653	63	38½" × 23¼" × 14¾"	38 lbs
003654	63	41½" × 23¼" × 14¾"	45 lbs
003657	63	41½" × 23¼" × 14¾"	45 lbs
003658	62	38½" × 23¼" × 14¾"	40 lbs
003659	62	35½" × 23¼" × 14¾"	35 lbs
003666	61	31½" × 23¼" × 14¾"	30 lbs
003667	61	37½" × 23¼" × 14¾"	34 lbs
003668	66	22½" × 15" × 13"	15 lbs
003670	61	40½" × 23¼" × 14¾"	33 lbs

PRODUCT	PAGE	PKG. DIMENSION	PKG. WEIGHT
003672	61	37½" × 23¼" × 14¾"	36 lbs
003673	67	28½" × 23¼" × 14¾"	30 lbs
003674	67	31½" × 23¼" × 14¾"	32 lbs
003676	67	37½" × 23¼" × 14¾"	44 lbs
003677	62	38½" × 23¼" × 14¾"	38 lbs
003678	62	38½" × 23¼" × 14¾"	38 lbs
003679	63	41½" × 23¼" × 14¾"	44 lbs
003680	61	31½" × 23¼" × 14¾"	28 lbs
003681	63	41½" × 23¼" × 14¾"	44 lbs
003682	63	44½" × 23¼" × 14¾"	48 lbs
003685	61	37½" × 23¼" × 14¾"	33 lbs
003690	61	40½" × 23¼" × 14¾"	36 lbs
003695	61	43½" × 23¼" × 14¾"	39 lbs
003903	74	16½" × 23¼" × 14¾"	17 lbs
003907	74	19½" × 23¼" × 14¾"	18 lbs
003908	75	37½" × 23¼" × 14¾"	33 lbs
003909	74	22½" × 23¼" × 14¾"	19 lbs
003910	75	31½" × 23¼" × 14¾"	26 lbs
003912	74	25½" × 23¼" × 14¾"	23 lbs
003913	75	28½" × 23¼" × 14¾"	25 lbs
003914	75	28½" × 23¼" × 14¾"	27 lbs
003915	75	37½" × 23¼" × 14¾"	30 lbs
003917	80	22½" × 19" × 13"	15 lbs
003918	75	31½" × 23¼" × 14¾"	28 lbs
003919	75	34½" × 23¼" × 14¾"	28 lbs
003920	75	31½" × 23¼" × 14¾"	30 lbs
003922	75	34½" × 23¼" × 14¾"	30 lbs
003923	80	22½" × 19" × 13"	15 lbs
003924	80	22½" × 23¼" × 14¾"	18 lbs
003925	75	37½" × 23¼" × 14¾"	34 lbs
003927	75	40½" × 23¼" × 14¾"	36 lbs
003928	75	43½" × 23¼" × 14¾"	39 lbs
003929	75	28½" × 23¼" × 14¾"	28 lbs
003931	80	22½" × 23¼" × 14¾"	18 lbs
003932	75	34½" × 23¼" × 14¾"	32 lbs

PRODUCT	PAGE	PKG. DIMENSION	PKG. WEIGHT
003933	80	19½" × 23¼" × 14¾"	17 lbs
003934	76	38½" × 23¼" × 14¾"	38 lbs
003935	75	37½" × 23¼" × 14¾"	36 lbs
003936	76	38½" × 23¼" × 14¾"	38 lbs
003937	74	22½" × 23¼" × 14¾"	23 lbs
003938	74	25½" × 23¼" × 14¾"	26 lbs
003939	75	28½" × 23¼" × 14¾"	29 lbs
003941	75	31½" × 23¼" × 14¾"	32 lbs
003942	75	34½" × 23¼" × 14¾"	34 lbs
003943	80	19½" × 23¼" × 14¾"	17 lbs
003944	75	40½" × 23¼" × 14¾"	38 lbs
003946	75	43½" × 23¼" × 14¾"	42 lbs
003947	77	41½" × 23¼" × 14¾"	44 lbs
003948	77	41½" × 23¼" × 14¾"	44 lbs
003949	77	38½" × 23¼" × 14¾"	40 lbs
003952	78	38½" × 23¼" × 14¾"	42 lbs
003953	78	38½" × 23¼" × 14¾"	42 lbs
003954	79	41½" × 23¼" × 14¾"	44 lbs
003957	79	41½" × 23¼" × 14¾"	44 lbs
003958	77	41½" × 23¼" × 14¾"	50 lbs
003959	79	41½" × 23¼" × 14¾"	44 lbs
003962	79	41½" × 23¼" × 14¾"	44 lbs
003963	77	44½" × 23¼" × 14¾"	48 lbs
003967	80	22½" × 15" × 13"	14 lbs
003968	80	35½" × 12½" × 10"	16 lbs
003969	80	47½" × 12½" × 10"	19 lbs
003972	81	28½" × 23¼" × 14¾"	30 lbs
003973	81	31½" × 23¼" × 14¾"	32 lbs
003974	81	37½" × 23¼" × 14¾"	44 lbs
003981	74	25½" × 23¼" × 14¾"	25 lbs
003982	76	35½" × 23¼" × 14¾"	35 lbs
003983	76	38½" × 23¼" × 14¾"	40 lbs
003984	78	35½" × 23¼" × 14¾"	36 lbs
003986	77	41½" × 23¼" × 14¾"	45 lbs
003987	77	38½" × 23¼" × 14¾"	38 lbs

PRODUCT	PAGE	PKG. DIMENSION	PKG. WEIGHT
003988	78	35½" × 23¼" × 14¾"	36 lbs
003989	76	35½" × 23¼" × 14¾"	35 lbs
003991	76	38½" × 23¼" × 14¾"	40 lbs
003992	77	41½" × 23¼" × 14¾"	45 lbs
003995	75	40½" × 23¼" × 14¾"	33 lbs
005300	56	34" × 30" × 18"	56 lbs
005301	56	34" × 30" × 18"	56 lbs
005302	56	34" × 30" × 18"	62 lbs
005303	56	34" × 30" × 18"	62 lbs
005304	56	46" × 33" × 17"	68 lbs
005305	56	46" × 33" × 17"	68 lbs
005413	34	*	*
005414	34	*	*
005415	34	*	*
005416	34	*	*
005417	35	*	*
005418	35	*	*
005419	35	*	*
005420	35	*	*
005421	36	*	*
005422	36	*	*
005460	42	*	*
005461	42	*	*
005462	42	*	*
005463	38	*	*
005464	38	*	*
005465	38	*	*
005466	38	*	*
005467	39	*	*
005468	39	*	*
005469	39	*	*
005470	39	*	*
005471	40	*	*
005472	40	*	*
005500	44	*	*

* Veuillez contacter notre service à la clientèle.

PRODUCT	PAGE	PKG. DIMENSION	PKG. WEIGHT
005501	44	*	*
005502	44	*	*
005503	46	*	*
005504	46	*	*
005505	46	*	*
005506	46	*	*
005507	47	*	*
005508	47	*	*
005509	47	*	*
005510	47	*	*
005511	48	*	*
005512	48	*	*
010700	113	-	0.1 lbs
011126	113	-	0.1 lbs
011240	113,134	-	0,1 lbs
011241	113,128	-	0,1 lbs
091519	124	22 ⁵ / ₈ " × 23 ³ / ₄ " × 14 ⁷ / ₈ "	50 lbs
093019	122	34 ⁵ / ₈ " × 23 ³ / ₄ " × 14 ⁷ / ₈ "	103 lbs
093319	122	37 ⁵ / ₈ " × 23 ³ / ₄ " × 14 ⁷ / ₈ "	107 lbs
093619	122	40 ⁵ / ₈ " × 23 ³ / ₄ " × 14 ⁷ / ₈ "	-
100056	112	4 ¹ / ₂ " × 4 ¹ / ₂ " × 4 ¹ / ₂ "	2 lbs
100080	112	4 ¹ / ₂ " × 4 ¹ / ₂ " × 4 ¹ / ₂ "	2 lbs
100081	112	4 ¹ / ₂ " × 4 ¹ / ₂ " × 4 ¹ / ₂ "	2 lbs
100082	112	4 ¹ / ₂ " × 4 ¹ / ₂ " × 4 ¹ / ₂ "	2 lbs
100083	112	4 ¹ / ₂ " × 4 ¹ / ₂ " × 4 ¹ / ₂ "	2 lbs
100085	112	4 ¹ / ₂ " × 4 ¹ / ₂ " × 4 ¹ / ₂ "	2 lbs
100086	112	4 ¹ / ₂ " × 4 ¹ / ₂ " × 4 ¹ / ₂ "	2 lbs
100132	113,134	-	0.4 lbs
100133	113,134	-	0.4 lbs
100134	113	-	0.2 lbs
100135	113	-	0.2 lbs
103619	123	40 ⁵ / ₈ " × 23 ³ / ₄ " × 14 ⁷ / ₈ "	-
200902	111	25 ¹ / ₂ " × 19 ¹ / ₄ " × 1 ³ / ₈ "	6 lbs
200903	111	25 ¹ / ₂ " × 19 ¹ / ₄ " × 1 ³ / ₈ "	6 lbs
200904	111	25 ¹ / ₂ " × 19 ¹ / ₄ " × 1 ³ / ₈ "	6 lbs

PRODUCT	PAGE	PKG. DIMENSION	PKG. WEIGHT
200905	111	25 ¹ / ₂ " × 19 ¹ / ₄ " × 1 ³ / ₈ "	7 lbs
200906	111	25 ¹ / ₂ " × 19 ¹ / ₄ " × 1 ³ / ₈ "	7 lbs
200907	111	25 ¹ / ₂ " × 19 ¹ / ₄ " × 1 ³ / ₈ "	7 lbs
200908	111	38" × 19 ¹ / ₄ " × 1 ³ / ₈ "	7 lbs
200909	111	38" × 19 ¹ / ₄ " × 1 ³ / ₈ "	8 lbs
200910	111	38" × 19 ¹ / ₄ " × 1 ³ / ₈ "	8 lbs
200911	111	38" × 19 ¹ / ₄ " × 1 ³ / ₈ "	8 lbs
200912	111	25 ¹ / ₂ " × 19 ¹ / ₄ " × 1 ³ / ₈ "	7 lbs
200913	111	25 ¹ / ₂ " × 19 ¹ / ₄ " × 1 ³ / ₈ "	7 lbs
200914	111	38" × 19 ¹ / ₄ " × 1 ³ / ₈ "	7 lbs
200915	111	38" × 19 ¹ / ₄ " × 1 ³ / ₈ "	8 lbs
200916	111	25 ¹ / ₂ " × 19 ¹ / ₄ " × 1 ³ / ₈ "	6 lbs
200917	111	25 ¹ / ₂ " × 19 ¹ / ₄ " × 1 ³ / ₈ "	7 lbs
200918	111	25 ¹ / ₂ " × 19 ¹ / ₄ " × 1 ³ / ₈ "	7 lbs
200919	111	25 ¹ / ₂ " × 19 ¹ / ₄ " × 1 ³ / ₈ "	7 lbs
200920	111	38" × 19 ¹ / ₄ " × 1 ³ / ₈ "	7 lbs
200921	111	38" × 19 ¹ / ₄ " × 1 ³ / ₈ "	8 lbs
200922	111	38" × 19 ¹ / ₄ " × 1 ³ / ₈ "	8 lbs
200923	111	38" × 19 ¹ / ₄ " × 1 ³ / ₈ "	8 lbs
200924	111	28 ¹ / ₂ " × 19 ¹ / ₄ " × 1 ³ / ₈ "	6 lbs
200925	111	28 ¹ / ₂ " × 19 ¹ / ₄ " × 1 ³ / ₈ "	6 lbs
200926	111	28 ¹ / ₂ " × 19 ¹ / ₄ " × 1 ³ / ₈ "	6 lbs
200927	110	38" × 19 ¹ / ₄ " × 1 ³ / ₈ "	8 lbs
200928	110	38" × 19 ¹ / ₄ " × 1 ³ / ₈ "	8 lbs
200929	110	38" × 19 ¹ / ₄ " × 1 ³ / ₈ "	7 lbs
200930	110	- × 19 ¹ / ₄ " × 1 ³ / ₈ "	6 lbs
200931	110	- × 19 ¹ / ₄ " × 1 ³ / ₈ "	7 lbs
200932	110	- × 19 ¹ / ₄ " × 1 ³ / ₈ "	8 lbs
200933	110	28 ¹ / ₂ " × 19 ¹ / ₄ " × 1 ³ / ₈ "	7 lbs
200934	110	38" × 19 ¹ / ₄ " × 1 ³ / ₈ "	7 lbs
200935	110	38" × 19 ¹ / ₄ " × 1 ³ / ₈ "	8 lbs
200936	132	26" × 19 ¹ / ₄ " × 1 ⁵ / ₁₆ "	6 lbs
200939	132	38" × 19 ¹ / ₄ " × 1 ⁵ / ₁₆ "	7 lbs
200941	132	33 ³ / ₈ " × 14 ⁷ / ₈ " × 1 ¹ / ₄ "	7 lbs
200942	132	20 ⁵ / ₈ " × 14 ⁷ / ₈ " × 1 ¹ / ₄ "	7 lbs

PRODUCT	PAGE	PKG. DIMENSION	PKG. WEIGHT
200943	132	10 ⁷ / ₈ " × 14 ⁷ / ₈ " × 1 ¹ / ₄ "	6 lbs
200946	132	27 ³ / ₈ " × 14 ⁷ / ₈ " × 1 ¹ / ₄ "	7 lbs
200949	110	38" × 18 ¹ / ₄ " × 1 ³ / ₈ "	7 lbs
200950	110	28 ¹ / ₂ " × 19 ¹ / ₄ " × 1 ³ / ₈ "	6 lbs
205036	128	21 ¹ / ₂ " × 9 ¹ / ₄ " × 5 ⁷ / ₈ "	9 lbs
205037	129	21 ¹ / ₂ " × 9 ¹ / ₄ " × 5 ⁷ / ₈ "	9 lbs
205038	128	21 ¹ / ₂ " × 9 ¹ / ₄ " × 5 ⁷ / ₈ "	11 lbs
205039	129	21 ¹ / ₂ " × 9 ¹ / ₄ " × 5 ⁷ / ₈ "	11 lbs
205040	128	21 ¹ / ₂ " × 16" × 4 ¹ / ₂ "	12 lbs
205041	129	21 ¹ / ₂ " × 16" × 4 ¹ / ₂ "	12 lbs
205217	100	22 ¹ / ₄ " × 8 ¹ / ₄ " × 4"	9 lbs
205218	100	22 ¹ / ₄ " × 8 ¹ / ₄ " × 4"	9 lbs
205219	100	22 ¹ / ₄ " × 8 ¹ / ₄ " × 4"	9 lbs
205220	101	22 ¹ / ₄ " × 8 ¹ / ₄ " × 4"	9 lbs
205221	101	22 ¹ / ₄ " × 8 ¹ / ₄ " × 4"	9 lbs
205222	101	22 ¹ / ₄ " × 8 ¹ / ₄ " × 4"	9 lbs
205223	100	22 ¹ / ₄ " × 8 ¹ / ₄ " × 6"	11 lbs
205224	100	22 ¹ / ₄ " × 8 ¹ / ₄ " × 6"	11 lbs
205225	100	22 ¹ / ₄ " × 8 ¹ / ₄ " × 6"	11 lbs
205226	102	22 ¹ / ₄ " × 8 ¹ / ₄ " × 6"	11 lbs
205227	102	22 ¹ / ₄ " × 8 ¹ / ₄ " × 6"	11 lbs
205228	102	22 ¹ / ₄ " × 8 ¹ / ₄ " × 6"	11 lbs
205229	100	22 ¹ / ₄ " × 14 ¹ / ₄ " × 4"	12 lbs
205230	100	22 ¹ / ₄ " × 14 ¹ / ₄ " × 4"	12 lbs
205231	100	22 ¹ / ₄ " × 14 ¹ / ₄ " × 4"	12 lbs
205232	101	22 ¹ / ₄ " × 14 ¹ / ₄ " × 4"	12 lbs
205233	101	22 ¹ / ₄ " × 14 ¹ / ₄ " × 4"	12 lbs
205234	101	22 ¹ / ₄ " × 14 ¹ / ₄ " × 4"	12 lbs
205238	103	22 ¹ / ₄ " × 8 ¹ / ₄ " × 4"	4 lbs
205240	102	21" × 14 ¹ / ₈ " × 6 ¹ / ₈ "	8 lbs
205241	102	21" × 14 ¹ / ₈ " × 6 ¹ / ₈ "	8 lbs
205242	102	21" × 14 ¹ / ₈ " × 6 ¹ / ₈ "	8 lbs
205317	100	22 ¹ / ₄ " × 8 ¹ / ₄ " × 4"	9 lbs
205318	100	22 ¹ / ₄ " × 8 ¹ / ₄ " × 4"	9 lbs
205319	100	22 ¹ / ₄ " × 8 ¹ / ₄ " × 4"	9 lbs

PRODUCT	PAGE	PKG. DIMENSION	PKG. WEIGHT
205320	101	22 ¹ / ₄ " × 8 ¹ / ₄ " × 4"	9 lbs
205321	101	22 ¹ / ₄ " × 8 ¹ / ₄ " × 4"	9 lbs
205322	101	22 ¹ / ₄ " × 8 ¹ / ₄ " × 4"	9 lbs
205323	100	22 ¹ / ₄ " × 8 ¹ / ₄ " × 6"	11 lbs
205324	100	22 ¹ / ₄ " × 8 ¹ / ₄ " × 6"	11 lbs
205325	100	22 ¹ / ₄ " × 8 ¹ / ₄ " × 6"	11 lbs
205326	102	22 ¹ / ₄ " × 8 ¹ / ₄ " × 6"	11 lbs
205327	102	22 ¹ / ₄ " × 8 ¹ / ₄ " × 6"	11 lbs
205328	102	22 ¹ / ₄ " × 8 ¹ / ₄ " × 6"	11 lbs
205329	100	22 ¹ / ₄ " × 14 ¹ / ₄ " × 4"	12 lbs
205330	100	22 ¹ / ₄ " × 14 ¹ / ₄ " × 4"	12 lbs
205331	100	22 ¹ / ₄ " × 14 ¹ / ₄ " × 4"	12 lbs
205332	101	22 ¹ / ₄ " × 14 ¹ / ₄ " × 4"	12 lbs
205333	101	22 ¹ / ₄ " × 14 ¹ / ₄ " × 4"	12 lbs
205334	101	22 ¹ / ₄ " × 14 ¹ / ₄ " × 4"	12 lbs
205338	103	22 ¹ / ₄ " × 8 ¹ / ₄ " × 4"	4 lbs
205340	102	21" × 14 ¹ / ₈ " × 6 ¹ / ₈ "	8 lbs
205341	102	21" × 14 ¹ / ₈ " × 6 ¹ / ₈ "	8 lbs
205342	102	21" × 14 ¹ / ₈ " × 6 ¹ / ₈ "	8 lbs
210060	131	22 ¹ / ₄ " × 14 ¹ / ₄ " × 4"	16 lbs
210061	131	22 ¹ / ₄ " × 8 ¹ / ₄ " × 4"	8 lbs
210062	131	22 ¹ / ₄ " × 8 ¹ / ₄ " × 4"	8 lbs
210063	104	22 ¹ / ₄ " × 14 ¹ / ₄ " × 4"	16 lbs
210064	104	22 ¹ / ₄ " × 14 ¹ / ₄ " × 4"	16 lbs
210065	104	22 ¹ / ₄ " × 14 ¹ / ₄ " × 4"	16 lbs
210066	104	22 ¹ / ₄ " × 14 ¹ / ₄ " × 4"	16 lbs
210067	104	22 ¹ / ₄ " × 14 ¹ / ₄ " × 4"	16 lbs
210068	104	22 ¹ / ₄ " × 14 ¹ / ₄ " × 4"	16 lbs
210069	104	22 ¹ / ₄ " × 8 ¹ / ₄ " × 4"	8 lbs
210070	104	22 ¹ / ₄ " × 8 ¹ / ₄ " × 4"	8 lbs
210071	104	22 ¹ / ₄ " × 8 ¹ / ₄ " × 4"	8 lbs
210072	104	22 ¹ / ₄ " × 8 ¹ / ₄ " × 4"	8 lbs
210073	104	22 ¹ / ₄ " × 8 ¹ / ₄ " × 4"	8 lbs
210074	104	22 ¹ / ₄ " × 8 ¹ / ₄ " × 4"	8 lbs
210077	104	22 ¹ / ₄ " × 8 ¹ / ₄ " × 4"	8 lbs

PRODUCT	PAGE	PKG. DIMENSION	PKG. WEIGHT
210080	102	22¼" × 8¼" × 4"	8 lbs
215009	130	22¼" × 14¼" × 4"	12 lbs
215019	108,134	3" × 3" × 1½"	0,5 lbs
215206	103	22¼" × 14¼" × 4"	12 lbs
215207	103	22¼" × 14¼" × 4"	12 lbs
215208	103	22¼" × 14¼" × 4"	12 lbs
215306	103	22¼" × 14¼" × 4"	12 lbs
215307	103	22¼" × 14¼" × 4"	12 lbs
215308	103	22¼" × 14¼" × 4"	12 lbs
225201	105	21½" × 8½" × 5¾"	3 lbs
225202	105	21½" × 8½" × 5¾"	3 lbs
225203	105	21½" × 8½" × 5¾"	3 lbs
225204	105	21½" × 14½" × 5¾"	6 lbs
225205	105	21½" × 14½" × 5¾"	6 lbs
225206	105	21½" × 14½" × 5¾"	6 lbs
225207	106	21½" × 14½" × 6¼"	6 lbs
225208	106	21½" × 14½" × 6¼"	6 lbs
225209	106	21½" × 14½" × 6¼"	6 lbs
225210	107	21½" × 8½" × 5¾"	13 lbs
225211	107	21½" × 8½" × 5¾"	13 lbs
225212	107	21½" × 8½" × 5¾"	13 lbs
225213	107	21½" × 14½" × 5¾"	18 lbs
225214	107	21½" × 14½" × 5¾"	18 lbs
225215	107	21½" × 14½" × 5¾"	18 lbs
225301	105	21½" × 8½" × 5¾"	3 lbs
225302	105	21½" × 8½" × 5¾"	3 lbs
225303	105	21½" × 8½" × 5¾"	3 lbs
225304	105	21½" × 14½" × 5¾"	5 lbs
225305	105	21½" × 14½" × 5¾"	5 lbs
225306	105	21½" × 14½" × 5¾"	5 lbs
225307	106	21½" × 14½" × 6¼"	6 lbs
225308	106	21½" × 14½" × 6¼"	6 lbs
225309	106	21" × 14½" × 6½"	13 lbs
225310	107	21" × 8½" × 5¾"	13 lbs
225311	107	21" × 8½" × 5¾"	13 lbs

PRODUCT	PAGE	PKG. DIMENSION	PKG. WEIGHT
225312	107	21" × 8½" × 5¾"	13 lbs
225313	107	21" × 14½" × 5¾"	18 lbs
225314	107	21" × 14½" × 5¾"	18 lbs
225315	107	21" × 14½" × 5¾"	18 lbs
299033	114	16" × 6½" × 3"	2 lbs
299034	114	16" × 6½" × 3"	1 lb
299035	114	16" × 6½" × 3"	2 lbs
299036	114	16" × 6½" × 3"	1 lb
299037	114	16" × 6½" × 3"	2 lbs
299038	114	16" × 6½" × 3"	1 lb
299039	114	16" × 6½" × 3"	2 lbs
299040	114	16" × 6½" × 3"	1 lb
299045	114	- × 2" × 2"	-
299046	114	5" × 2" × 2"	1 lb
306001	139	25" × 11" × 3"	8 lbs
306002	143	23½" × 15" × 4"	8 lbs
306003	142	17" × 15" × 4"	7 lbs
306011	139	25" × 11" × 3"	8 lbs
306200	140	25" × 11" × 3"	8 lbs
306201	141	25" × 11" × 3"	8 lbs
306202	146	25" × 11" × 3"	7 lbs
306203	147	25" × 11" × 3"	7 lbs
306205	145	25" × 11" × 3"	8 lbs
306206	138	25" × 11" × 3"	9 lbs
306210	140	25" × 11" × 3"	8 lbs
306211	141	25" × 11" × 3"	8 lbs
306213	147	25" × 11" × 3"	7 lbs
306215	145	25" × 11" × 3"	8 lbs
306216	138	25" × 11" × 3"	9 lbs

© Julien 2023 – All rights reserved. Printed in Canada.



1 866 901-5624
customerservice@julien.ca

955, rue Lachance, Québec (Québec)
Canada G1P 2H3

homerefinements.ca

Product: HR-DECOPLUMB-CATALOG-2023-EN
A-2023-06
996312081